



Herbert Street, NW5

£1,350,000

This mid terraced Victorian house has three bedrooms, one bathroom and a south facing private garden. The property is in fantastic condition throughout and arranged over three floors.

Herbert Street is conveniently located within easy reach of Kentish Town, Chalk Farm, Gospel Oak and is only a short distance to Hampstead Heath and Belsize Park.

Features

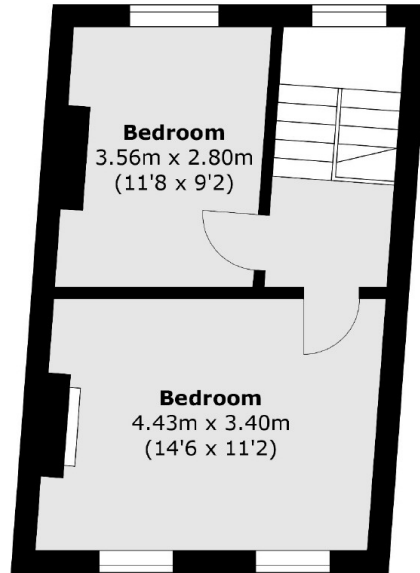
- Three Bedrooms
- Great Condition
- Private Garden
- One Bathroom
- Guest WC
- Freehold



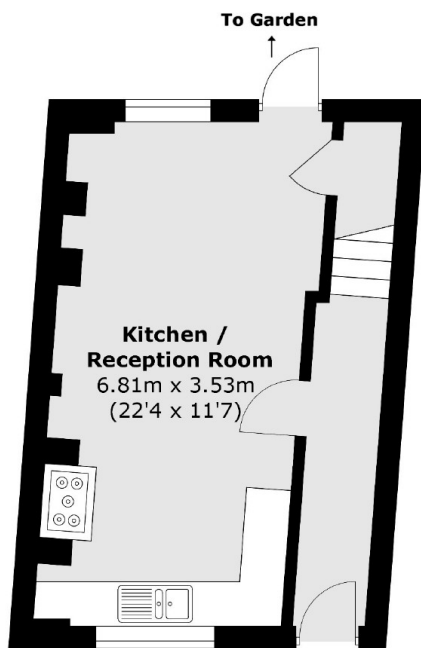
Herbert Street, NW5



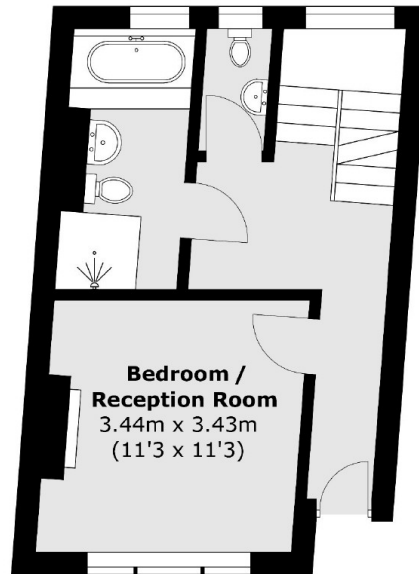
Herbert Street, London, NW5



First Floor



Lower Ground Floor



Raised Ground Floor

Total area (approx.): 93.5 sq. m (1,006.4 sq. ft)