

Bardolph Road, N7

£575 Per week

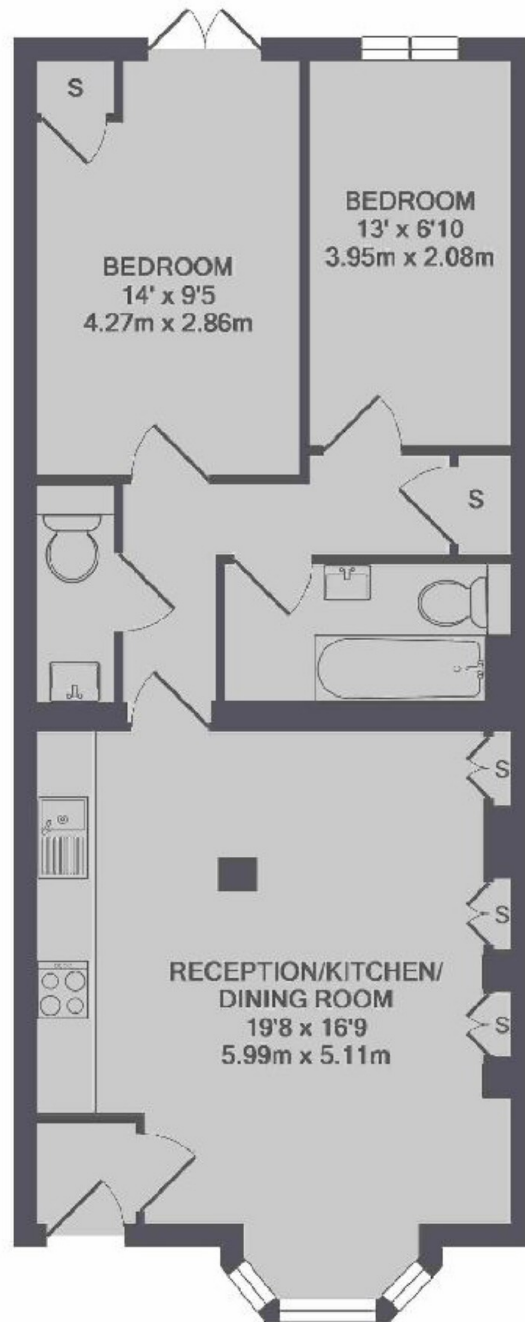
A well presented garden flat in a mid-terrace Victorian house with a private entrance, a large open plan kitchen/reception room, two double bedrooms, a family bathroom with an additional WC and south facing private garden.

Bardolph Road is a tree-lined residential road in Tufnell Park with easy access to Tufnell Park tube, Upper Holloway station and Holloway Road station.

Features

- Private Garden
- Private Entrance
- Modern Kitchen
- Large Living Area
- Double Bedrooms
- Wood Flooring

Bardolph Road, London, N7



TOTAL APPROX. FLOOR AREA 686 SQ.FT. (63.7 SQ.M.)
Made with Metropix ©2018

Dexters

Kentish Town & Camden
274 Kentish Town Road
London
NW5 2AA
Lettings
020 7483 6391

Energy Rating: . We aim to make our particulars both accurate and reliable. However they are not guaranteed; nor do they form part of an offer or contract. If you require clarification on any points then please contact us, especially if you're traveling some distance to view. Please note that appliances and heating systems have not been tested and therefore no warranties can be given as to their good working order.

 **RICS** | Regulated
Estate Agent
and Letting Agent

[dexters.co.uk](https://www.dexters.co.uk)