



Murray Street, NW1

£807 Per week

Just off the desirable Camden Square is this stunning split level two double bedroom apartment. The property has been finished to an excellent standard with Hammonds fitted wardrobes, Crosswater shower and taps and lovely wood flooring. There is also direct access to a private South Facing terrace.

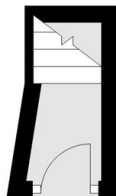
Murray Street, situated in the Camden Square conservation area, is superbly located close to the many amenities of bustling Camden Town, with Regent's Park and Primrose Hill within easy reach.

Features

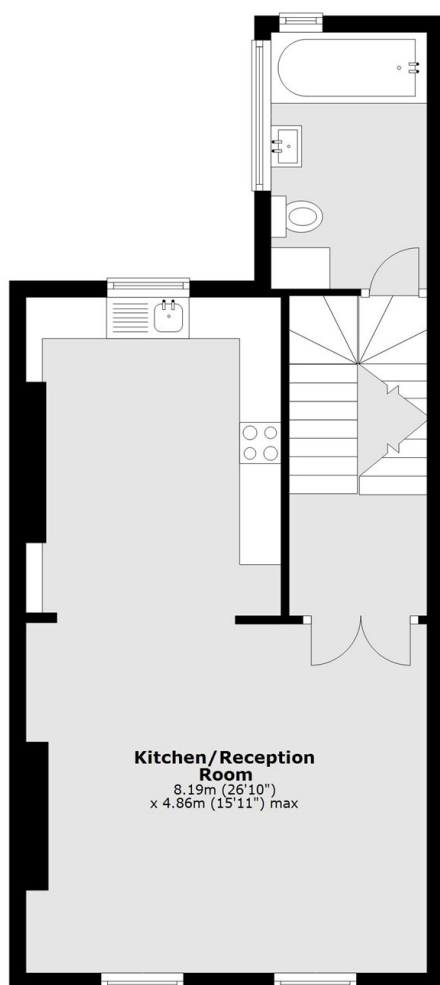
- Two Double Bedrooms
- Split Level
- South Facing Terrace
- 26' Reception / Kitchen
- Excellent Condition
- High Ceilings

Murray Street, London, NW1

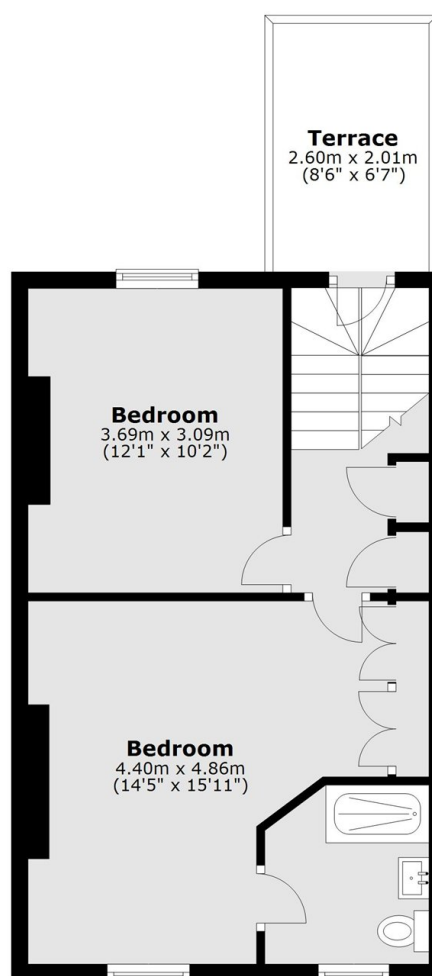
Ground Floor



First Floor



Second Floor



Main area: Approx. 87.2 sq. metres (938.3 sq. feet)
Plus roof terrace, approx. 5.9 sq. metres (63.3 sq. feet)

Dexters

Kentish Town & Camden
274 Kentish Town Road
London
NW5 2AA
Lettings
020 7483 6391

Energy Rating: C. We aim to make our particulars both accurate and reliable. However they are not guaranteed; nor do they form part of an offer or contract. If you require clarification on any points then please contact us, especially if you're traveling some distance to view. Please note that appliances and heating systems have not been tested and therefore no warranties can be given as to their good working order.

 **RICS** | Regulated
Estate Agent
and Letting Agent

dexters.co.uk