



## Maitland Park Road, NW3

### £440,000

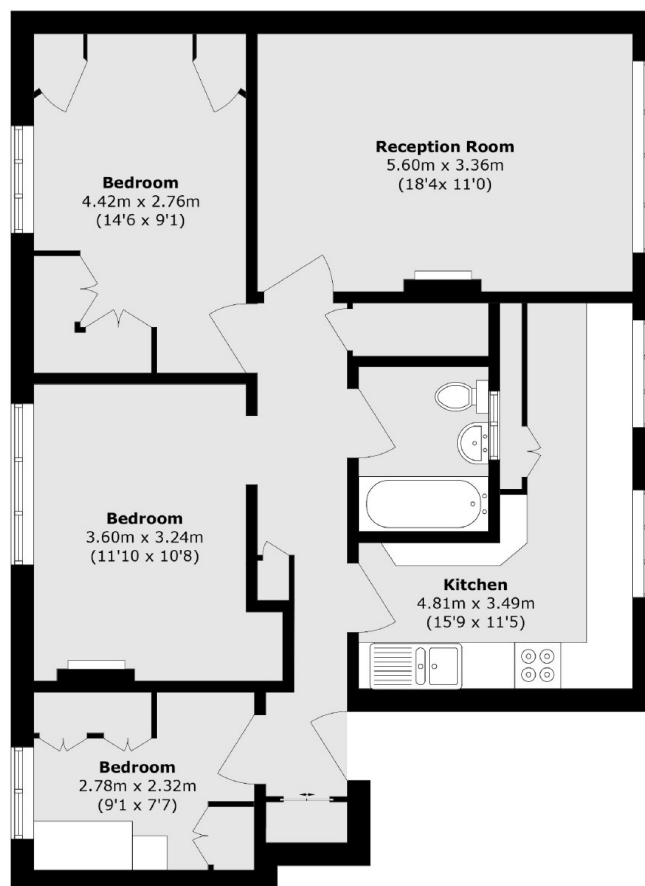
This spacious and well-proportioned apartment has three bedrooms, a bright reception room and a separate kitchen.

The leafy Maitland Park conservation area is a sought after residential area between Belsize Park and Chalk Farm and is only 0.5 miles away from both Northern line stations. Hampstead Station is also easily accessible, including the variety of shops, restaurants and cafes surrounding the area.

### Features

- Three Bedrooms
- One Bathroom
- Leasehold
- Chain Free
- First Floor
- Great Location

# Maitland Park Road, London, NW3



Total area (approx.): 75.1 sq. m (808.4 sq. ft)

## Dexters

Kentish Town & Camden  
274 Kentish Town Road  
London  
NW5 2AA  
Sales  
020 7483 6390

Energy Rating: D. We aim to make our particulars both accurate and reliable. However they are not guaranteed; nor do they form part of an offer or contract. If you require clarification on any points then please contact us, especially if you're traveling some distance to view. Please note that appliances and heating systems have not been tested and therefore no warranties can be given as to their good working order.

 **RICS** | Regulated  
Estate Agent  
and Letting Agent

[dexters.co.uk](https://www.dexters.co.uk)