



## Grafton Road, NW5

£2,000 Per week

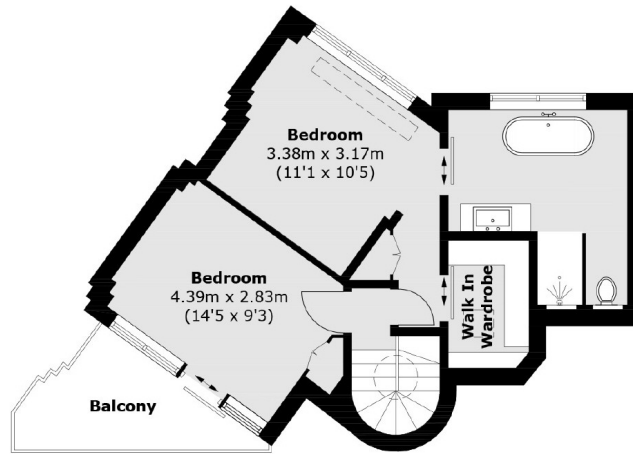
A breathtaking four double bedroom modern detached house designed by a world renowned architect, flooded with natural light and tasteful interior design. The property comprises of an open plan kitchen-living-dining area, a modern kitchen and a stunning private balcony and garden.

Heathpoint House is just moments away from Hampstead Heath and within easy reach of the London Overground and the Northern Line. Local amenities such as popular shops, pubs and restaurants of lower Hampstead and Swain's Lane are also close by.

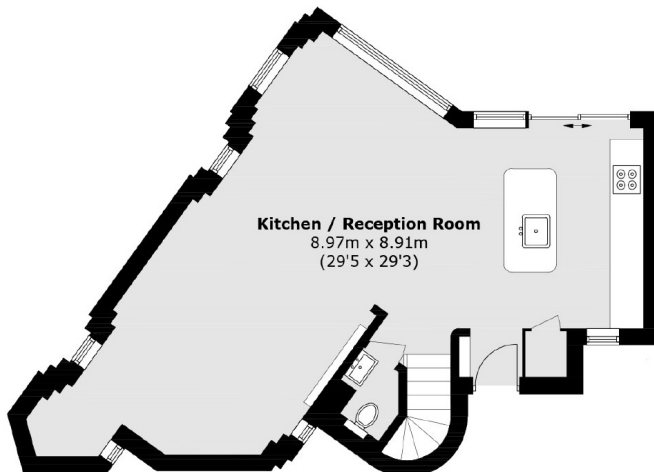
### Features

- Four Bedroom
- Three Bathroom
- Open Plan Kitchen-Diner
- Private Garden
- Private Balcony
- Office Space

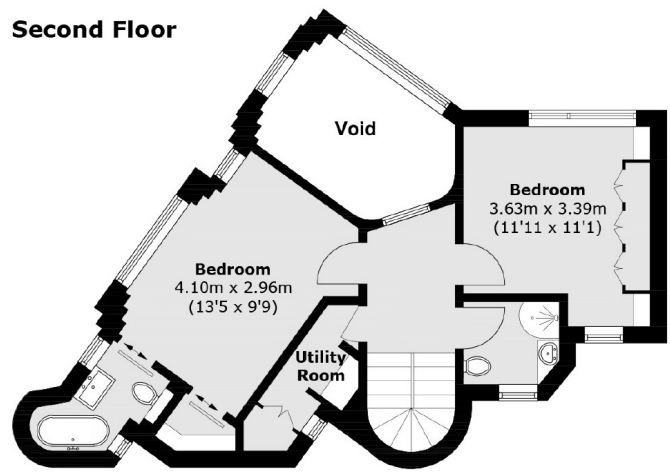
Grafton Road,  
LONDON, NW5



Second Floor



Ground Floor



First Floor

Total area (approx.): 135.3 sq. m (1,456.3 sq. ft)  
(Excluding Void)  
Balcony area : 6.0 sq. m (64.6 sq. ft)