



Caversham Road, NW5

£393 Per week

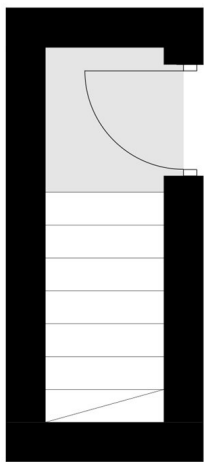
A well presented top-floor, one-bedroom period conversion set within an impressive semi-detached house.

Ideally located close to Kentish Town Underground and Thameslink stations, with the area's vibrant social and lifestyle amenities right on the doorstep.

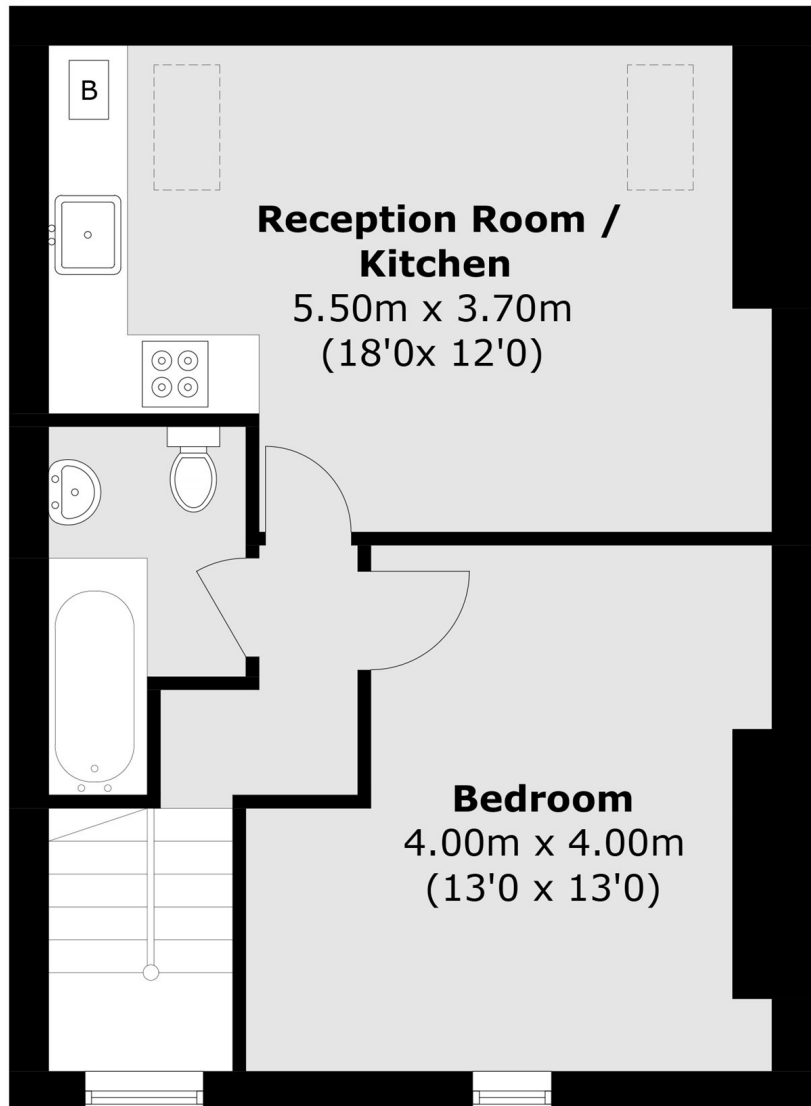
Features

- One Bedroom
- Top Floor
- Period Conversion
- Wooden Floors
- Excellent Location
- Close to Tube

Caversham Road,
London, NW5



First Floor



Second Floor

Total area (approx.): 44.0 sq. m (471.0 sq. ft)