



Marquis Road, NW1

£634 Per week

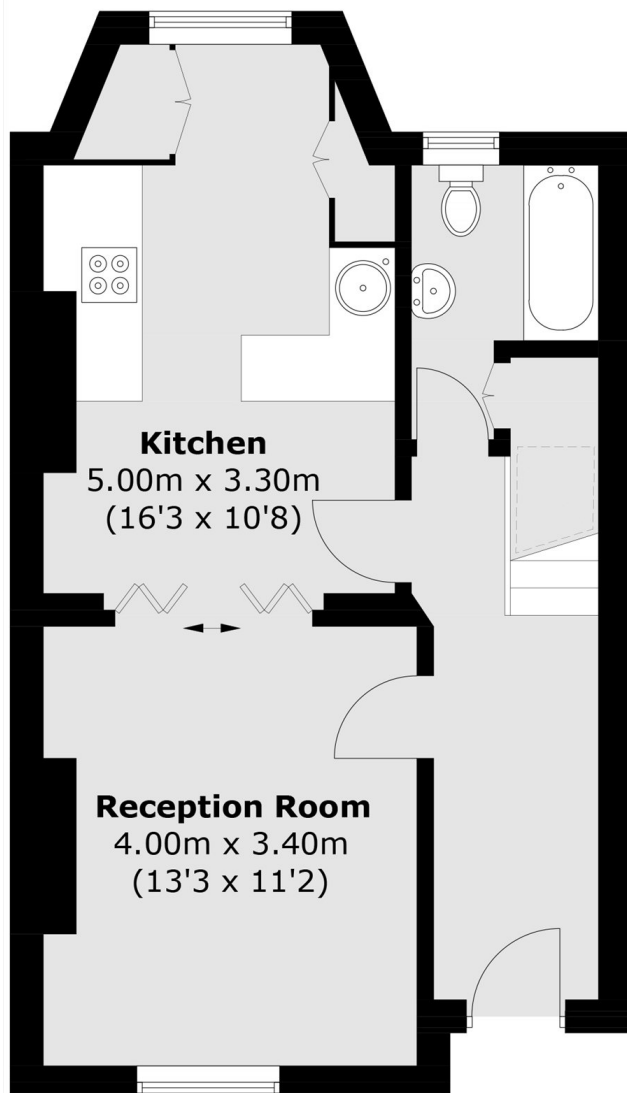
A bright and spacious two-bedroom split-level maisonette with an additional study/guest bedroom. The property features a generous through reception/kitchen with impressive floor-to-ceiling windows to both the front and rear, separated by dividing doors. There are two well-proportioned double bedrooms, a versatile study or guest room, and a large family bathroom suite.

Ideally situated within the ever-popular Camden Square Conservation Area, offering excellent Underground and mainline rail links.

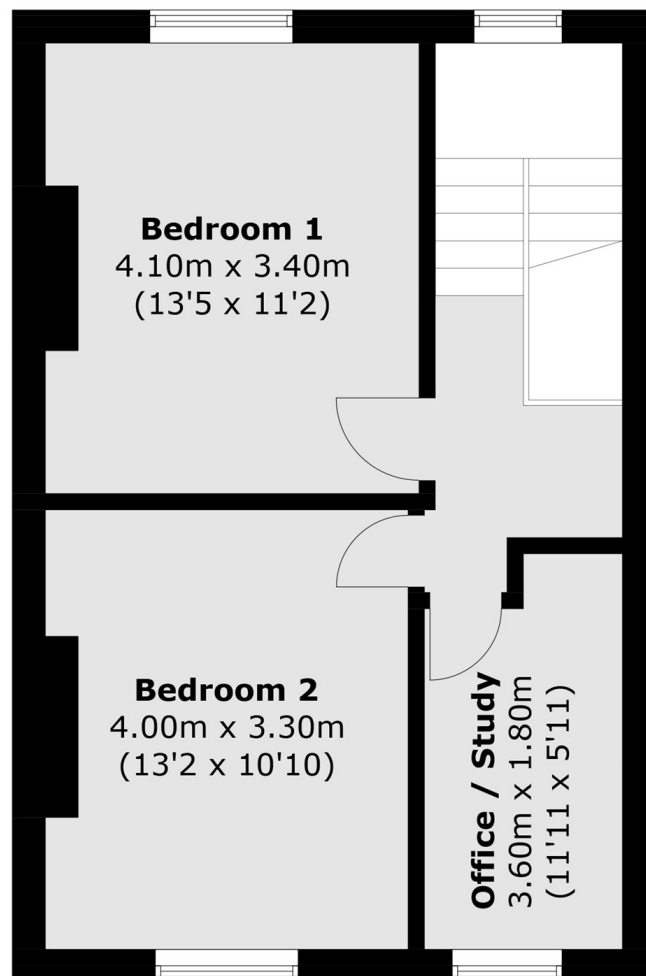
Features

- Split Level Maisonette
- Two Double Bedrooms
- Kitchen Diner
- Additional Guest Room
- Conservation Area
- Excellent Location

Marquis Road, London, NW1



Raised Ground Floor



First Floor

Total area (approx.): 86.0 sq. m (927.0 sq. ft)