



Marsh Wall, E14

£542 Per week

A large one bedroom apartment on the fourteenth floor of this sought after development. This modern apartment has an open plan reception room, floor to ceiling windows and direct river views.

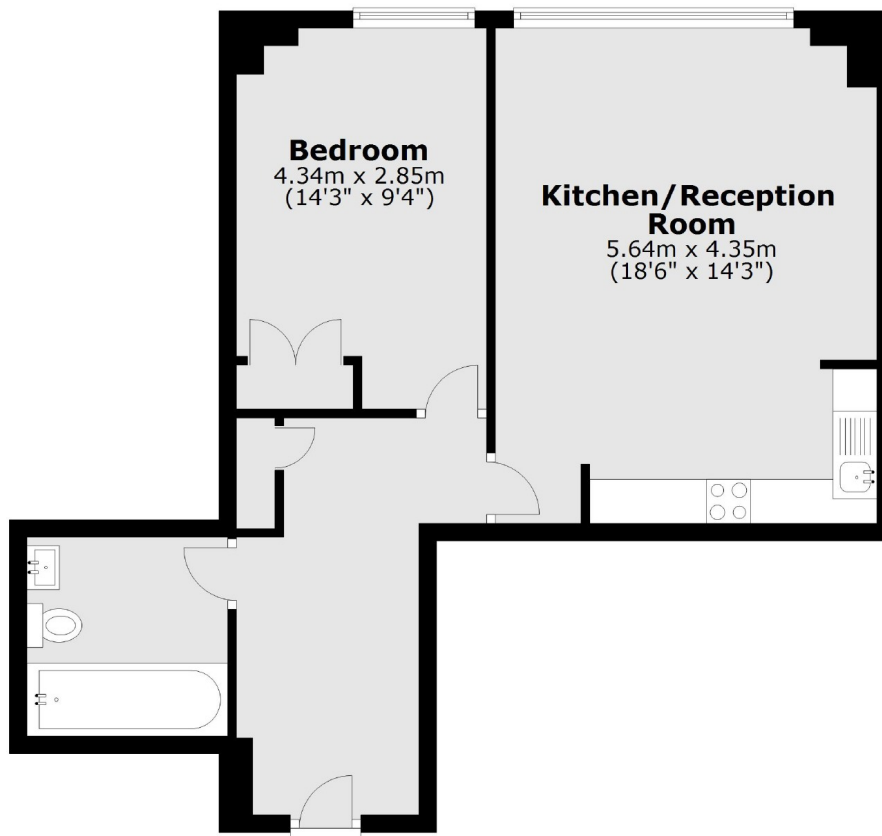
Landmark West Tower is within walking distance of the shops, bars and restaurants of Canary Wharf, including the former rum warehouse Rum and Sugar.

Features

- One Bedroom
- One Bathroom
- Fourteenth Floor
- Wooden Flooring
- Concierge
- Residents Gym

Marsh Wall, London, E14

Fourteenth Floor



Total area: approx. 53.5 sq. metres (575.4 sq. feet)