



## Baltimore Wharf, E14

£692 Per week

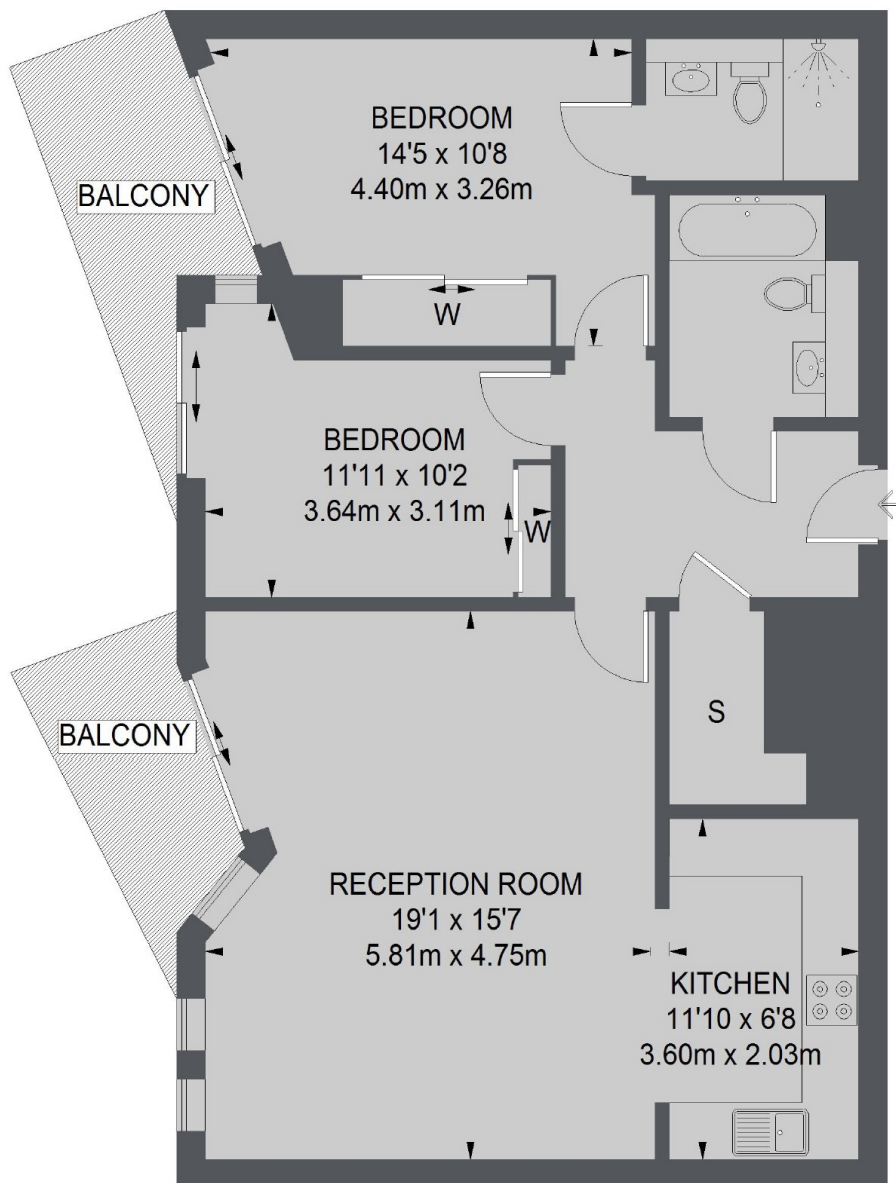
A beautifully presented two bedroom apartment on the eighth floor of this dockside development. This large apartment has an open plan reception room, courtyard views and a balcony stretching the length of the apartment.

Baltimore Wharf is moments away from the bars and restaurants of South Quay, including the popular Lotus Floating Restaurant.

### Features

- Two Bedrooms
- Two Bathrooms
- Eighth Floor
- Balcony
- Concierge
- Gym

# Baltimore Wharf, London, E14



TOTAL APPROX. FLOOR AREA  
844 SQ. FT. ( 78.38 SQ. M.)

## Dexters

Canary Wharf  
39 Westferry Road  
London  
E14 8JH  
Lettings  
0207 517 1190

Energy Rating: B. We aim to make our particulars both accurate and reliable. However they are not guaranteed; nor do they form part of an offer or contract. If you require clarification on any points then please contact us, especially if you're traveling some distance to view. Please note that appliances and heating systems have not been tested and therefore no warranties can be given as to their good working order.

 **RICS** | Regulated  
Estate Agent  
and Letting Agent

[dexters.co.uk](https://www.dexters.co.uk)