



## Wapping Lane, E1W

£500,000

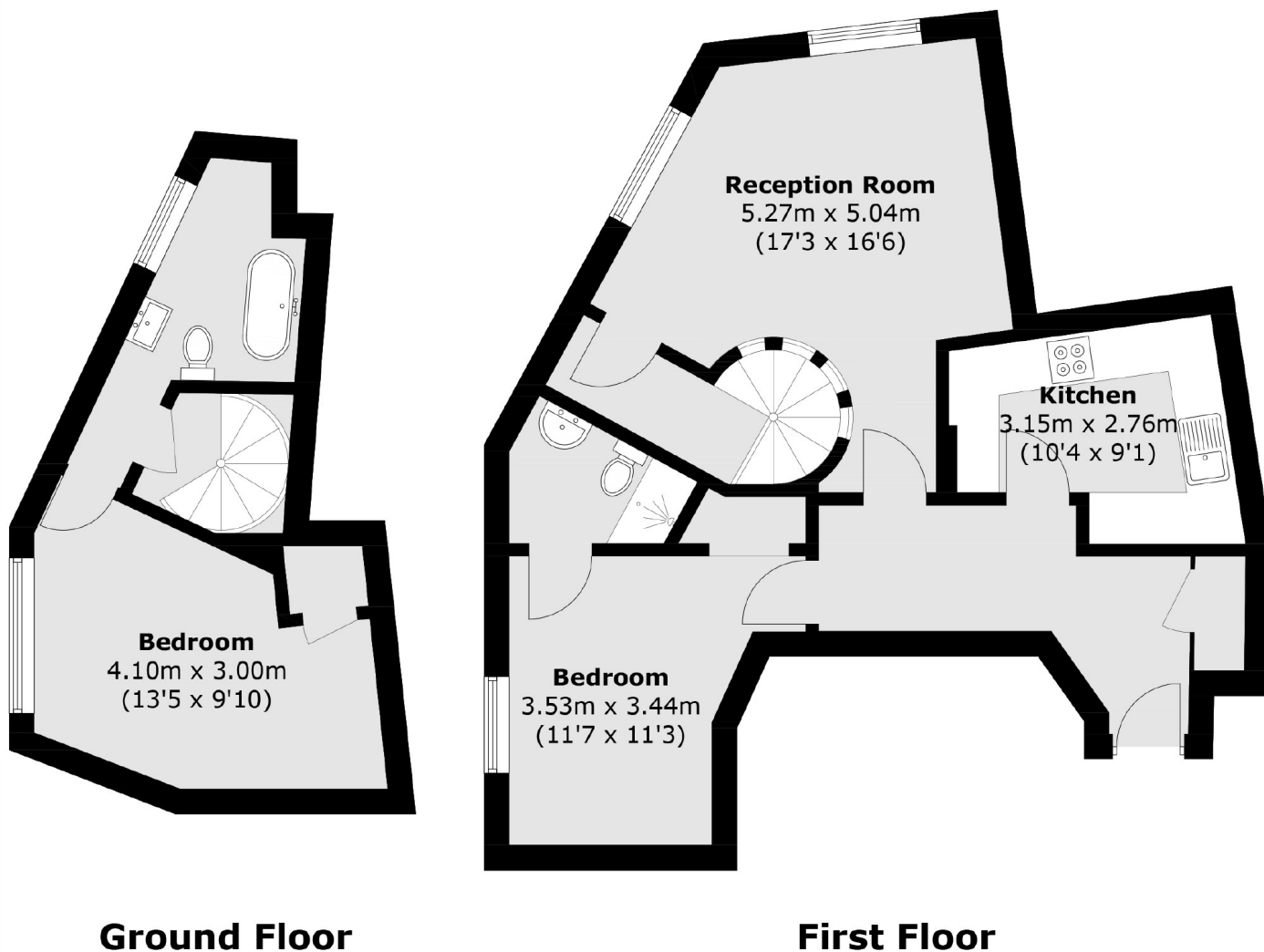
Located in Wapping's sought after development, Moran House, is this two bedroom split level home. Features include two bathrooms, day porter and allocated parking.

Moran House is just 322 feet from Wapping Overground Station.

### Features

- Split Level
- Two Bedrooms
- Two Bathrooms
- Day Porter
- Central Wapping
- Allocated Parking

# Wapping Lane, London, E1W



Total area (approx.): 72.7 sq. m (782.5 sq. ft)