



## Queen Elizabeth Street, SE1

£1,730 Per week

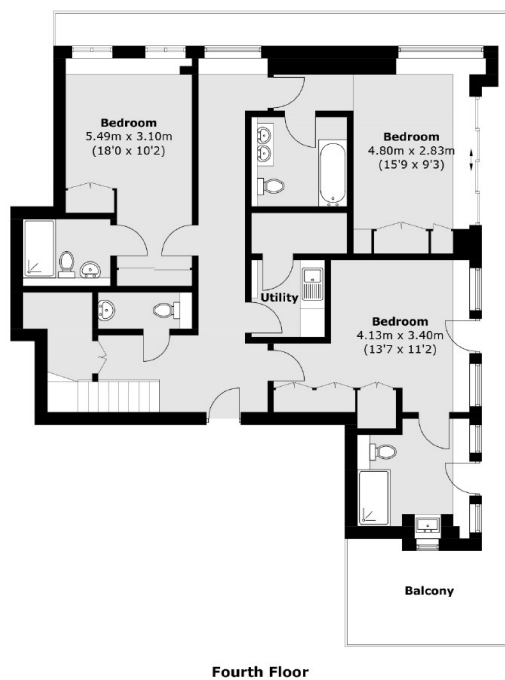
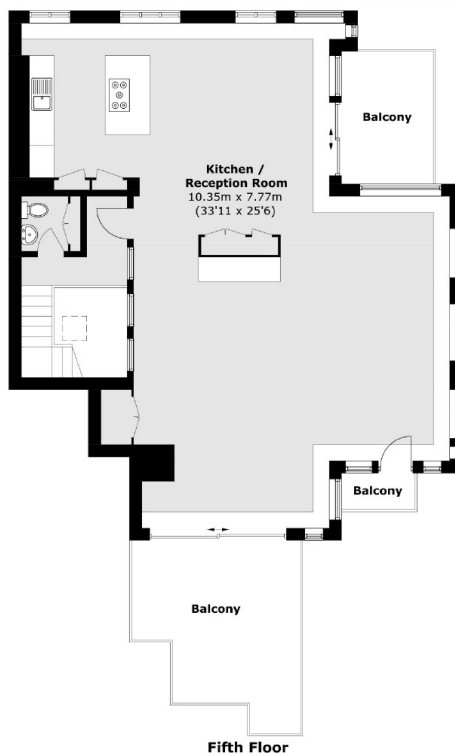
A brand new split level penthouse apartment arranged over 2300 square feet and located moments away from the River Thames. This warehouse conversion has three double bedrooms all with en-suite bathrooms and additional WCs both upstairs and downstairs. On the first floor the property also offers a utility room and large wrap around balcony and the second floor includes a roof terrace with direct views of The Shard & Tower Bridge, additional balcony and open-plan kitchen living area.

Southview House is set in the heart of trendy Shad Thames, which is filled with restaurants and bars. London Bridge Station is just a short walk, as is Tower Bridge and the Thames Riverfront.

### Features

- Three Double Bedrooms
- Three Bathrooms
- Wrap Around Terrace
- Utility Room
- Penthouse
- Air Conditioning

# Queen Elizabeth Street, London, SE1



Total area (approx.): 199.3 sq. m (2,145.2 sq. ft)  
Balcony (approx.): 52.5 sq. m (565.1 sq. ft)