

HODSHROVE ROAD

BRIGHTON



K.
KENDRICK PROPERTY SERVICES CO. UK
01273 600162
FOR SALE

5



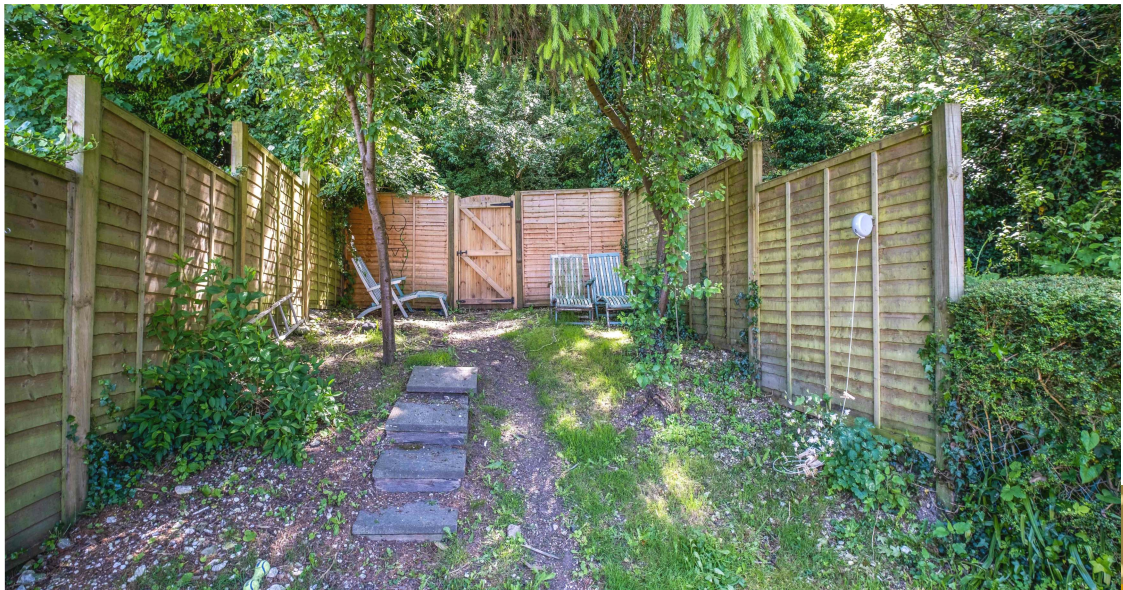
KENDRICK PROPERTY SERVICES



Kendrick Property Services are delighted to offer for sale this well presented two bedroom family home with a large south west facing garden. Hodshrove Road is located near the centre of Brighton and has superb bus routes which pass the University of Brighton continuing into the heart of the city. You will also find Moulsecoomb train station under half a mile away and the mainline Brighton station is under 2 miles away. Moving into the property you will find the well presented kitchen with space for appliances and with views across Brighton, making this a great place to relax. Towards the rear of the property you will find the large thru living/ dining room which offers plenty of space to entertain friends and family. Downstairs you will also find the family bathroom. Moving upstairs in this property you will notice the two good size double bedrooms which both have great views over Brighton and the large garden to the rear. This two bedroom semi detached home is not to be missed.

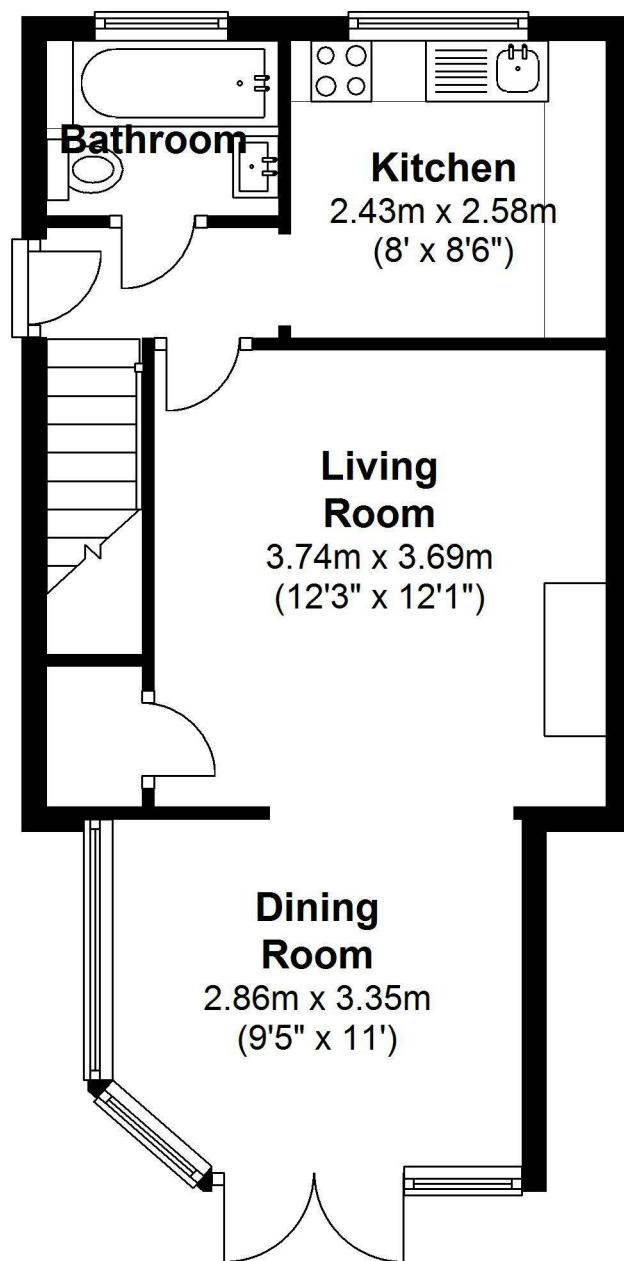


KENDRICK PROPERTY SERVICES



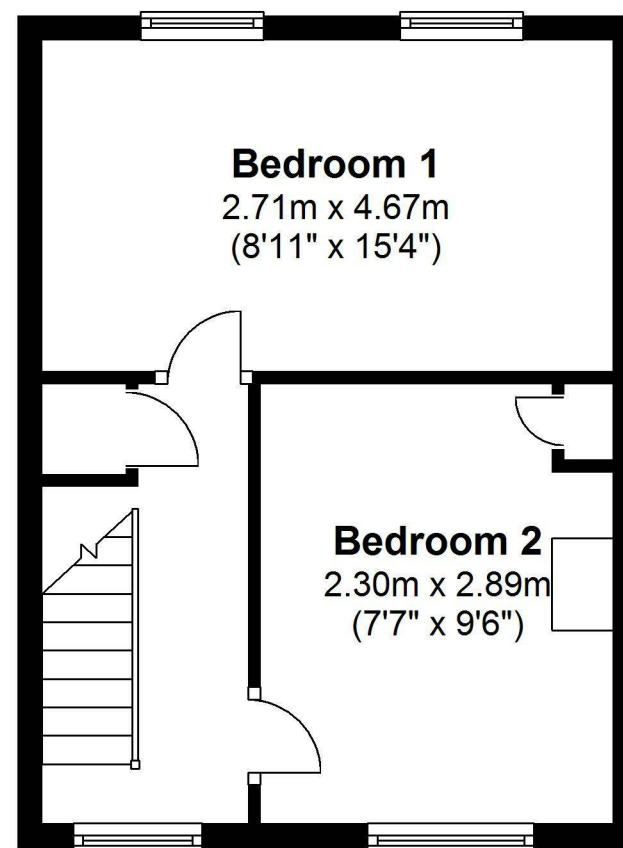
Ground Floor

Approx. 39.4 sq. metres (424.3 sq. feet)



First Floor

Approx. 26.1 sq. metres (280.7 sq. feet)



Total area: approx. 65.5 sq. metres (705.0 sq. feet)



10 - 12 Lewes Road, Brighton, BN2 3HP

01273 600162

sales@kendrickpropertyservices.co.uk

