

ST HELENS ROAD

BRIGHTON





KENDRICK PROPERTY SERVICES

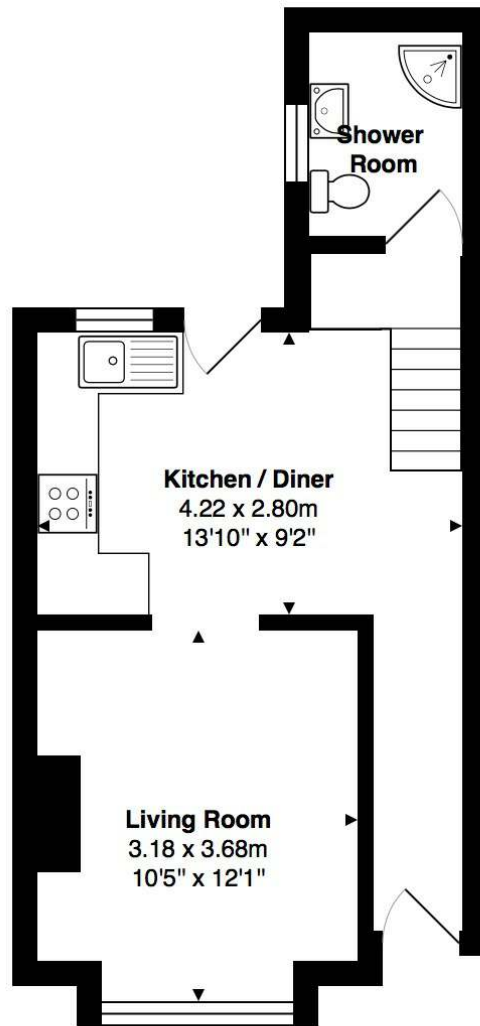


Kendrick Property Services are delighted to offer for sale this 3 bedroom end of terrace house situated in a popular residential location just off Hartington Road. This property is an ideal family home and comprises of a 20ft open plan living / dining room, kitchen, three spacious bedrooms, modern fitted bathroom and private rear garden with separate outdoor storage that has room for a washing machine/ fridge freezer. The property offers easy access into City Centre and Mainline Train Station. St Helens Road has exceptional potential is not to be missed!

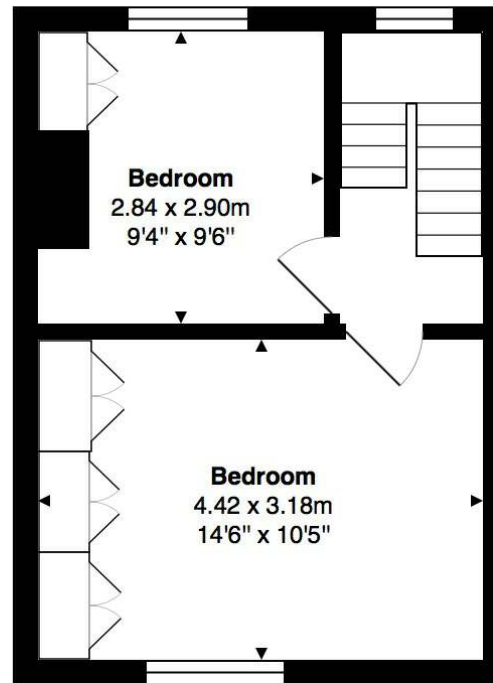


KENDRICK PROPERTY SERVICES

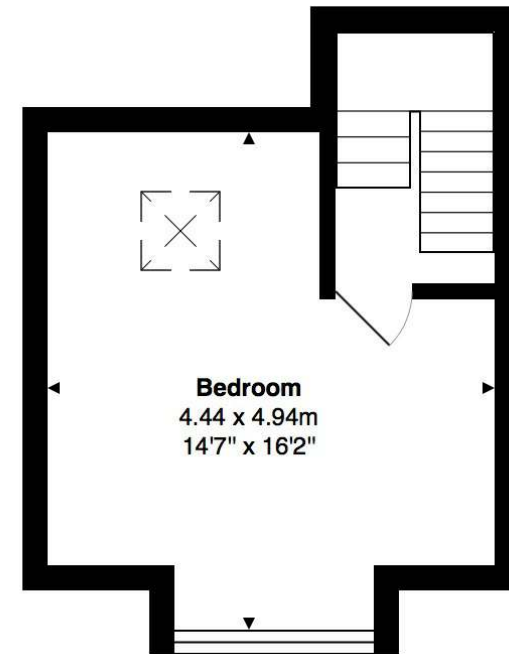




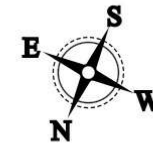
Ground Floor
Area: 31.3 m² ... 337 ft²



First Floor
Area: 27.6 m² ... 297 ft²



Second Floor
Area: 21.9 m² ... 236 ft²



Total Area: 80.8 m² ... 870 ft²



10 - 12 Lewes Road, Brighton, BN2 3HP

01273 600162

sales@kendrickpropertyservices.co.uk



A. These sales and particulars do not constitute any part of an offer of contract, and are for the guidance of prospective purchasers only and should not be relied on as statements of fact.

B. No representations are made in these particulars as to the condition of the property or as to whether any service or facilities are in good working order.

C. All measurements are approximate.