

# Frank Harris

— & Co. —



**River Rise Close, SE8**

**£2,800 pcm**

A stunning modern three bedroom two bathroom apartment in this new build development in Bloom Heights. Offered furnished.





Bloom Heights is located in a new development in the heart of Surrey Quay. Transport options include the underground and overground as well as numerous bus links. There are also plenty of local amenities at Surrey Quays Shopping Centre.

- 24 Hour Concierge • Wooden floors • Private balcony •
- Underfloor heating • Open plan living • Three bedrooms •







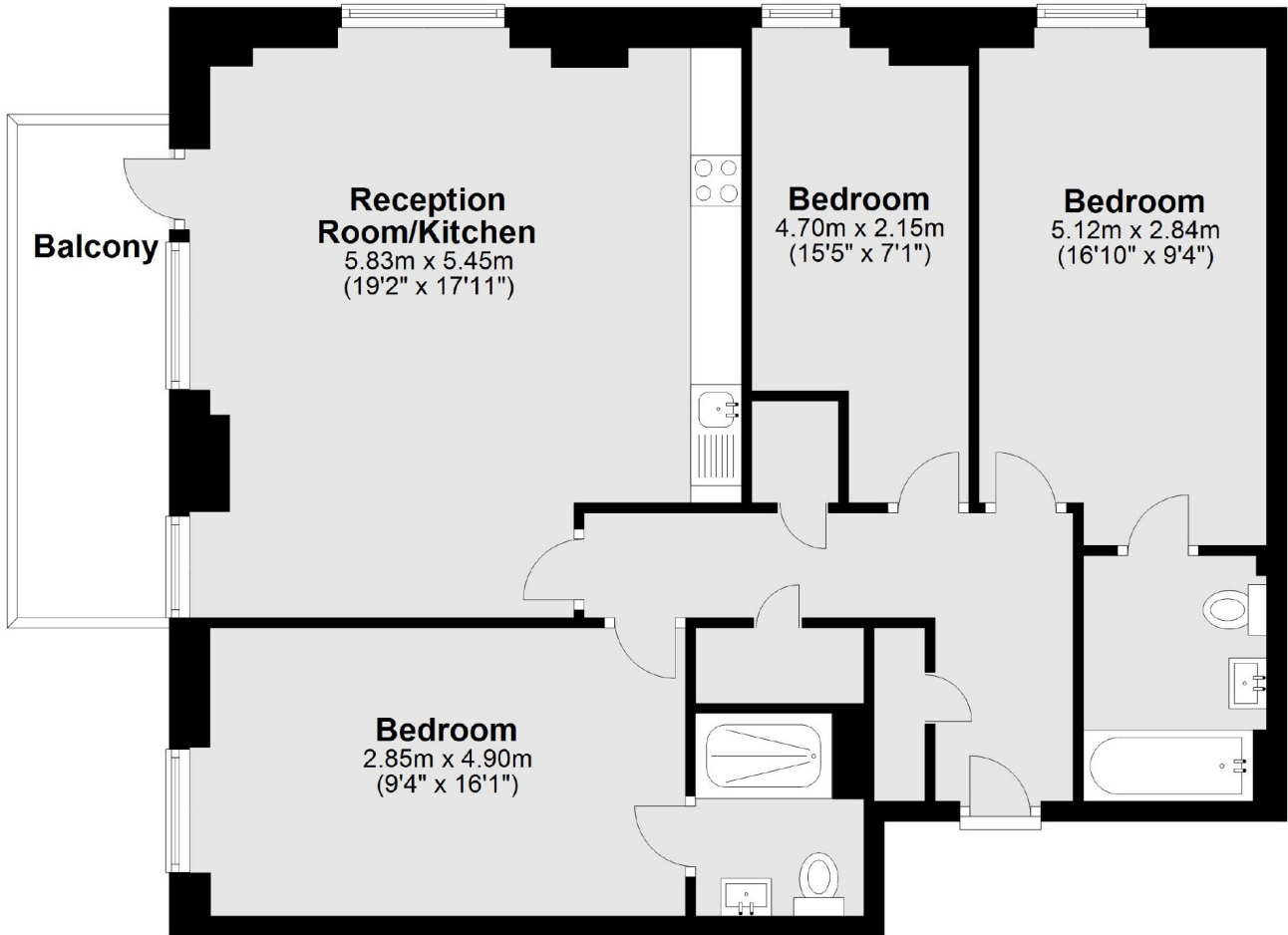






# Frank Harris & Co.

## First Floor



Main area: Approx. 89.0 sq. metres (957.5 sq. feet)

Plus balconies, approx. 7.8 sq. metres (84.0 sq. feet)

Frank Harris & Co. Tower Bridge & Bermondsey  
205 Tooley Street, London,  
SE1 2JX  
020 7234 0880  
[towerbridgelettings@frankharris.co.uk](mailto:towerbridgelettings@frankharris.co.uk)

Energy Rating: . We aim to make our particulars both accurate and reliable. However they are not guaranteed; nor do they form part of an offer or contract. If you require clarification on any points then please contact us, especially if you're traveling some distance to view. Please note that appliances and heating systems have not been tested and therefore no warranties can be given as to their good working order.

