

Frank Harris & Co.



Moody Street, E1

£3,100 pcm

A newly redecorated three bedroom split level apartment situated on Moody Street. Consisting of a spacious living area, separate kitchen with breakfast, a private garden and is offered furnished.

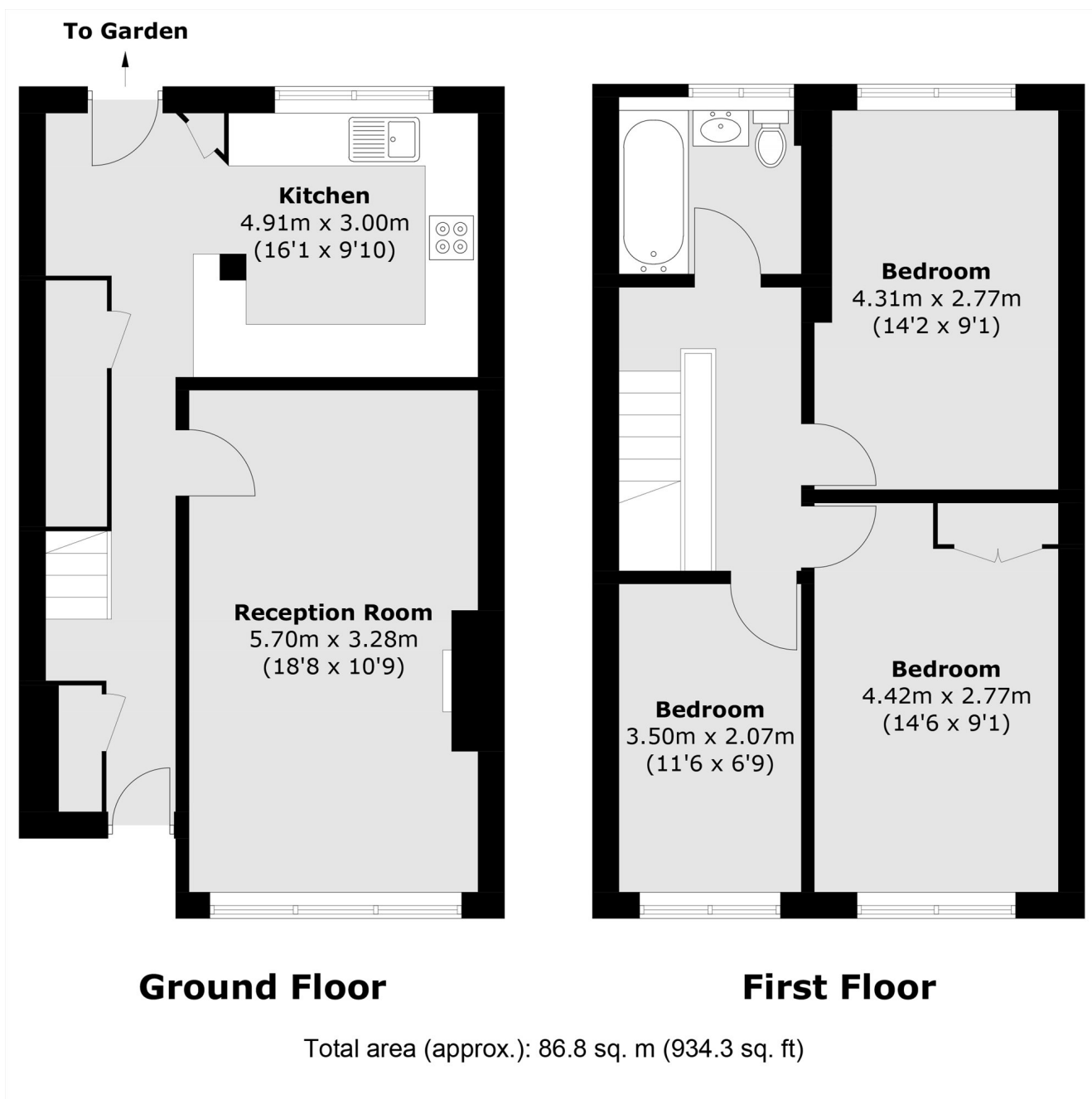


Moody Street is located very close to Queen Mary University and Mile End Park and is also within short walking distance of Mile End Station with great transport connections across The City.

- Three Double Bedrooms • One Bathroom • Split Level •
- Great Storage • Furnished • Private Garden •



Frank Harris & Co.



Frank Harris & Co. Tower Bridge
205 Tooley Street, London, SE1
2JX
020 7234 0880
towerbridgelettings@frankharris.co.uk

Energy Rating: D. We aim to make our particulars both accurate and reliable. However they are not guaranteed; nor do they form part of an offer or contract. If you require clarification on any points then please contact us, especially if you're traveling some distance to view. Please note that appliances and heating systems have not been tested and therefore no warranties can be given as to their good working order.

