

Frank Harris & Co.



Tower Bridge, SE1

£19,200 pcm

A stunning four bedroom apartment on the fourth floor offering five star living in the heart of London with uninterrupted views of one of the world's most iconic landmarks from one of two expansive balconies. Each double bedroom has its own en-suite and the property comes in at just under 2,400 sq ft.

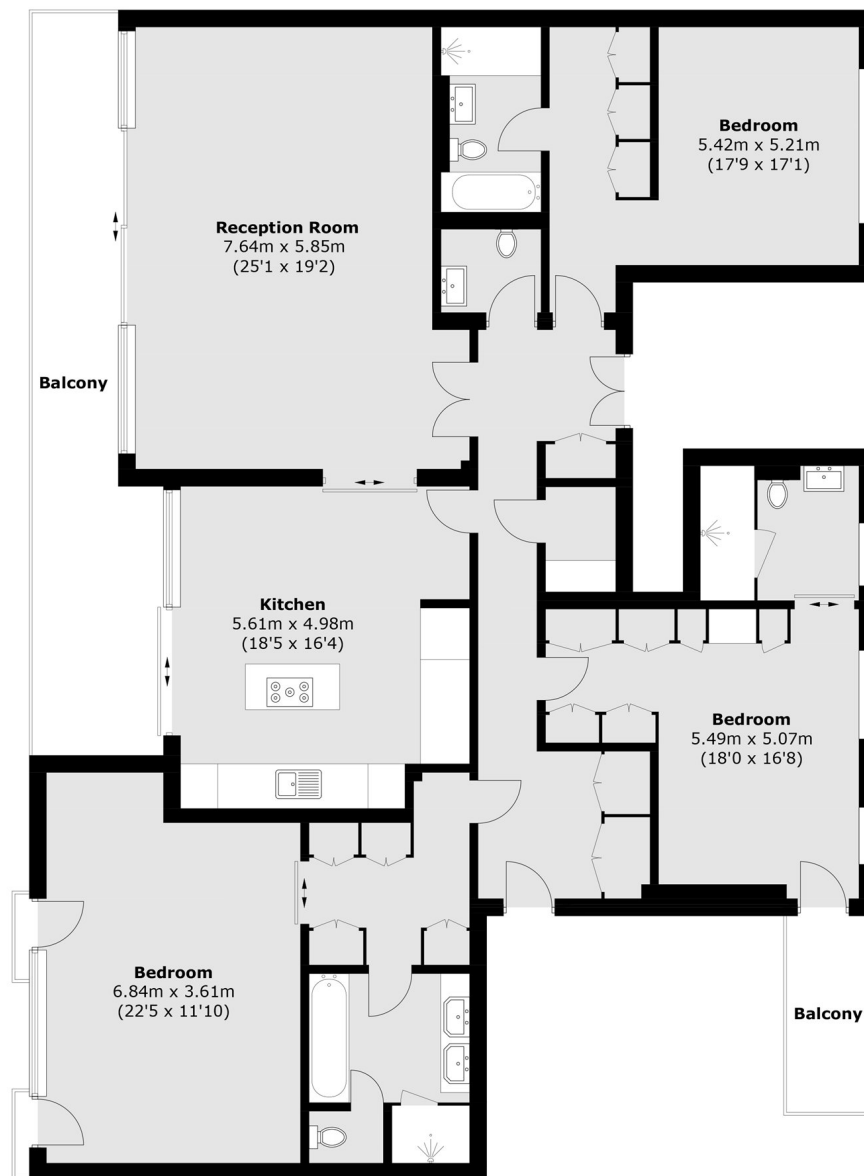
The development itself offers luxury living with 24-hour concierge, gym, sauna, 20m plunge pool and underground car parking.



- Four Double Bedrooms • Four Bathrooms • Two Terraces •
 - On Site Amenities •
-



Frank Harris & Co.



Total area (approx.): 209.8 sq. m (2,258.3 sq. ft)
Balcony area (approx.): 28.6 sq. m (307.8 sq. ft)

Frank Harris & Co. Tower Bridge
205 Tooley Street, London,
SE1 2JX
020 7234 0880
towerbridgelettings@frankharris.co.uk

Energy Rating: C. We aim to make our particulars both accurate and reliable. However they are not guaranteed; nor do they form part of an offer or contract. If you require clarification on any points then please contact us, especially if you're traveling some distance to view. Please note that appliances and heating systems have not been tested and therefore no warranties can be given as to their good working order.

