

# Frank Harris & Co.



## Boss Street, SE1

£3,300 pcm

A large well presented two bedroom two bathroom apartment located in the highly sought after warehouse conversion development Boss House.

Features of the apartment are the exposed brick throughout, the abundance of natural light in the living/dining area. Private balcony and a unique feature is the air conditioning in both bedrooms and living area.





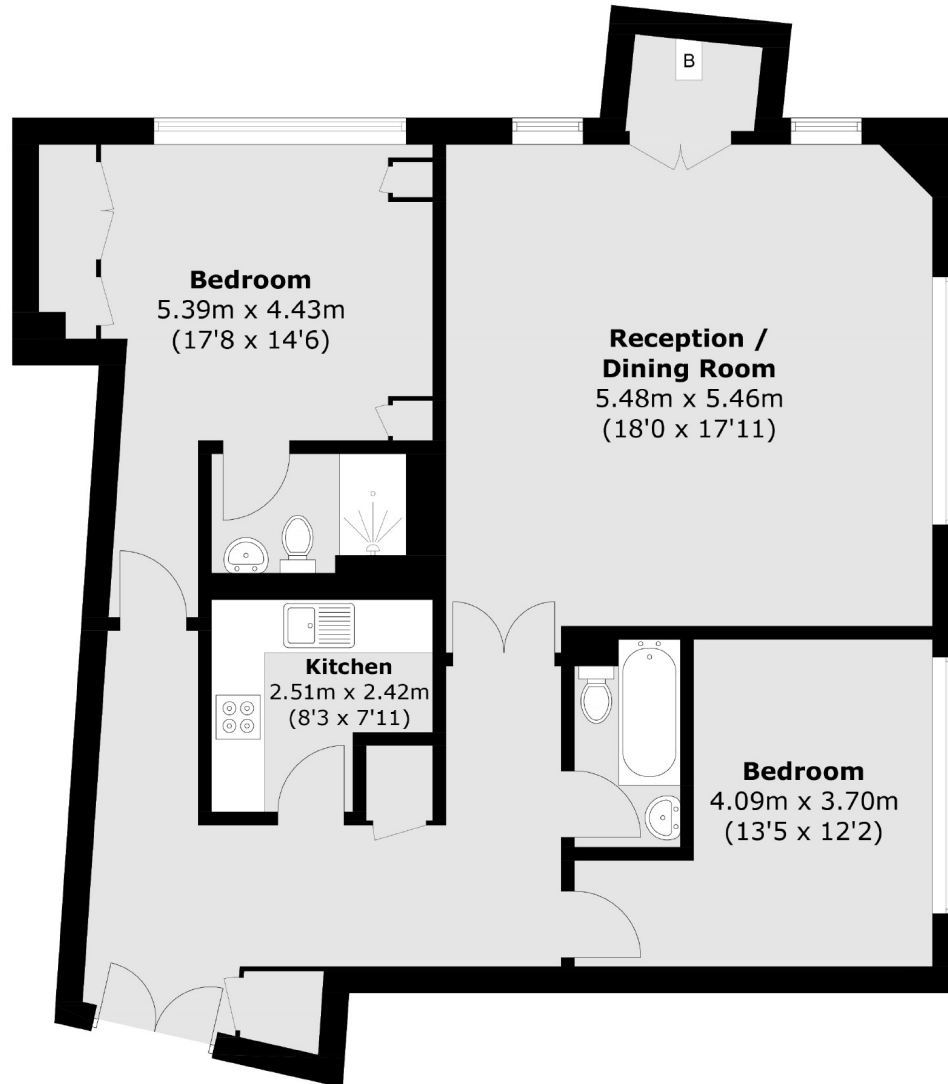
Located in historic riverside Shad Thames known for its Victorian Warehouse conversions and cobblestone streets and overhead walkways transformed into a stylish destination with apartments, restaurants and boutique shops offering a blend of industrial heritage and modern life right next to Tower Bridge. London Bridge Stations is 0.4 miles from the development for access to the Jubilee and Northern Line, Southern, South Eastern and Thames link Trains. Boss House is located opposite the newly built Dixon Hotel, this building dates from 1906 when it served as the Tower Bridge Magistrates Court. The Provisioners is an all day café and a worthwhile visit for a coffee and cake.

- Two Double Bedrooms • Two Bathrooms • Private Balcony •
- Warehouse Conversion • Porter Service • Great Location •





# Frank Harris & Co.



Total area (approx.): 92.3 sq. m (993.5 sq. ft)

Frank Harris & Co. Tower Bridge  
205 Tooley Street, London, SE1  
2JX  
020 7234 0880  
[towerbridgelettings@frankharris.co.uk](mailto:towerbridgelettings@frankharris.co.uk)

Energy Rating: C. We aim to make our particulars both accurate and reliable. However they are not guaranteed; nor do they form part of an offer or contract. If you require clarification on any points then please contact us, especially if you're traveling some distance to view. Please note that appliances and heating systems have not been tested and therefore no warranties can be given as to their good working order.

