



Hilda Road, UB2

£399,950

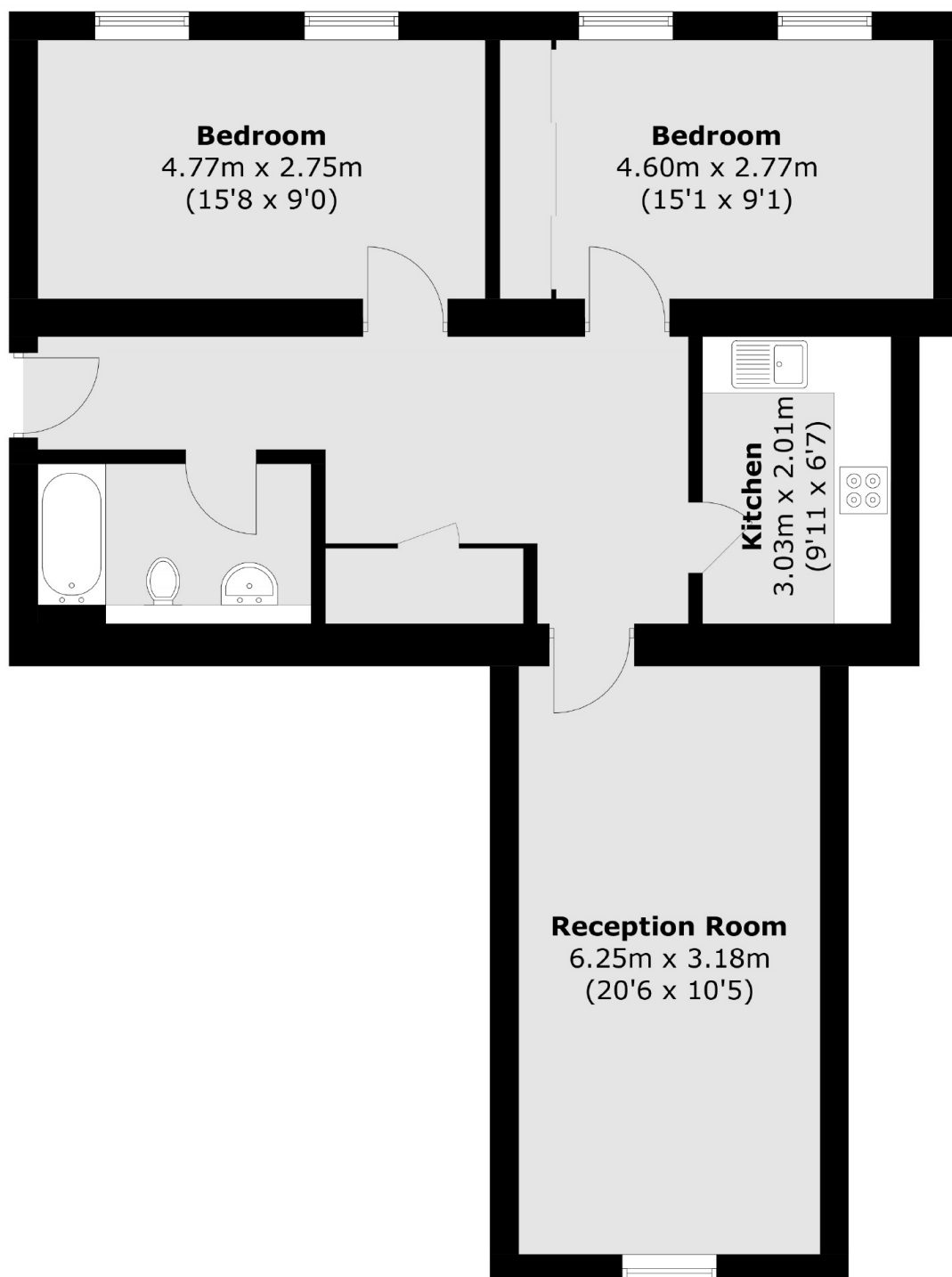
This top floor two double bedroom apartment in a period purpose built gated development offers 849.3 Square feet of living space. The property is set on the top floor of the building. The property is in great condition with a high spec kitchen, large living room and two double bedrooms. The property also comes with private parking and communal gardens

Located close to local shops, schools, amenities, Hanwell station and the Elizabeth Line. Further transport links provide easy access to Ealing and Greenford Underground and Heathrow.

Features

- OIEO £400,000
- Lift Access
- Private Parking
- Two Double Bedrooms
- Long Lease
- Modern Spec

Hilda Road, Southall, UB2



Total area (approx.): 78.9 sq. m (849.3 sq. ft)

Dexters

Northfields
140 Northfield Avenue
London
W13 9SB
Sales
020 8545 8588

Energy Rating: B. We aim to make our particulars both accurate and reliable. However they are not guaranteed; nor do they form part of an offer or contract. If you require clarification on any points then please contact us, especially if you're traveling some distance to view. Please note that appliances and heating systems have not been tested and therefore no warranties can be given as to their good working order.

 **RICS** | Regulated
Estate Agent
and Letting Agent

[dexters.co.uk](https://www.dexters.co.uk)