



Burnham Way, W13

£475,000

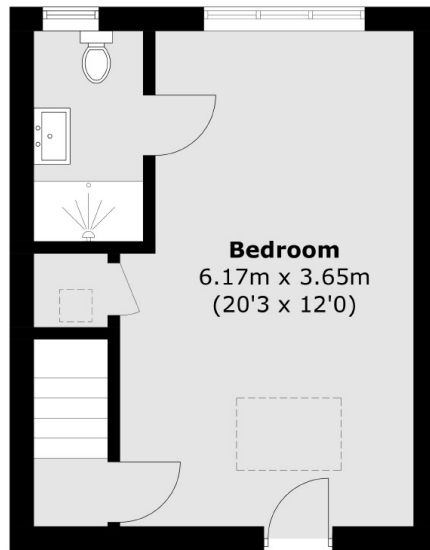
This split level maisonette occupies the two upper floors of this converted building. Offers over 750 sq. Ft of living space with two double bedrooms (main with ensuite shower room), main bathroom and open plan kitchen/ reception room. Benefits from long leasehold and off street Parking and no onward chain.

Located in this convenient location just a short walk from Boston Manor Station (Piccadilly line) with the interesting mix of local and independent shops on Northfields Avenue and a multiple choice of Parks also within easy reach. Viewing comes highly recommended.

Features

- Split Level Conversion
- Two Double Bedrooms
- Off Street Parking
- Ensuite Shower room
- Long Lease
- No Onward Chain

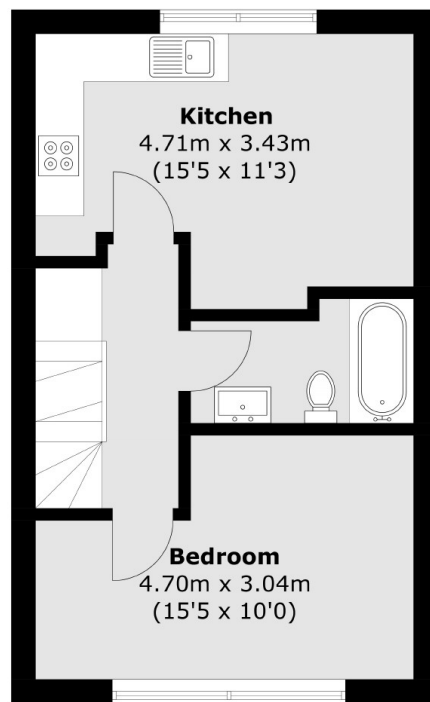
Burnham Way,
London, W13



Second Floor



Ground Floor



First Floor

Total area (approx.): 69.7 sq. m (750.3 sq. ft)

Dexters

Northfields
140 Northfield Avenue
London
W13 9SB
Sales
020 8545 8588

Energy Rating: C. We aim to make our particulars both accurate and reliable. However they are not guaranteed; nor do they form part of an offer or contract. If you require clarification on any points then please contact us, especially if you're traveling some distance to view. Please note that appliances and heating systems have not been tested and therefore no warranties can be given as to their good working order.

 **RICS** | Regulated
Estate Agent
and Letting Agent

dexters.co.uk