



Boston Road, W7

£340,000

This is a well presented one bedroom ground floor flat that comes with communal gardens and a garage.

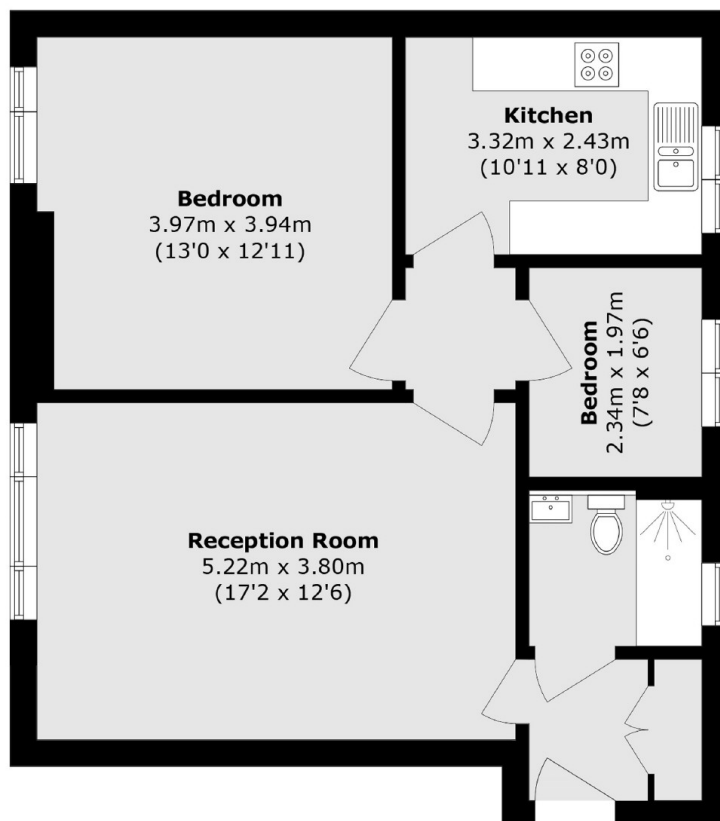
Wyndham Court is a small, private development just moments from Boston Manor Station (Piccadilly line), with Elthorne Park and local shops on your doorstep.

Offered with no onward chain, in turnkey condition and additional study room. Viewing is recommended.

Features

Two Bedrooms
Ground Floor
Excellent Condition
Garage
Adjacent to Tube
No Onward Chain

Boston Road,
London, W7



Total area (approx.): 59.7 sq. m (642.6 sq. ft)

Dexters

Northfields
140 Northfield Avenue
London
W13 9SB
Sales
020 8545 8588

Energy Rating: C. We aim to make our particulars both accurate and reliable. However they are not guaranteed; nor do they form part of an offer or contract. If you require clarification on any points then please contact us, especially if you're traveling some distance to view. Please note that appliances and heating systems have not been tested and therefore no warranties can be given as to their good working order.

 **RICS** | Regulated
Estate Agent
and Letting Agent

[dexters.co.uk](https://www.dexters.co.uk)