



Denman Avenue, UB2

£438 Per week

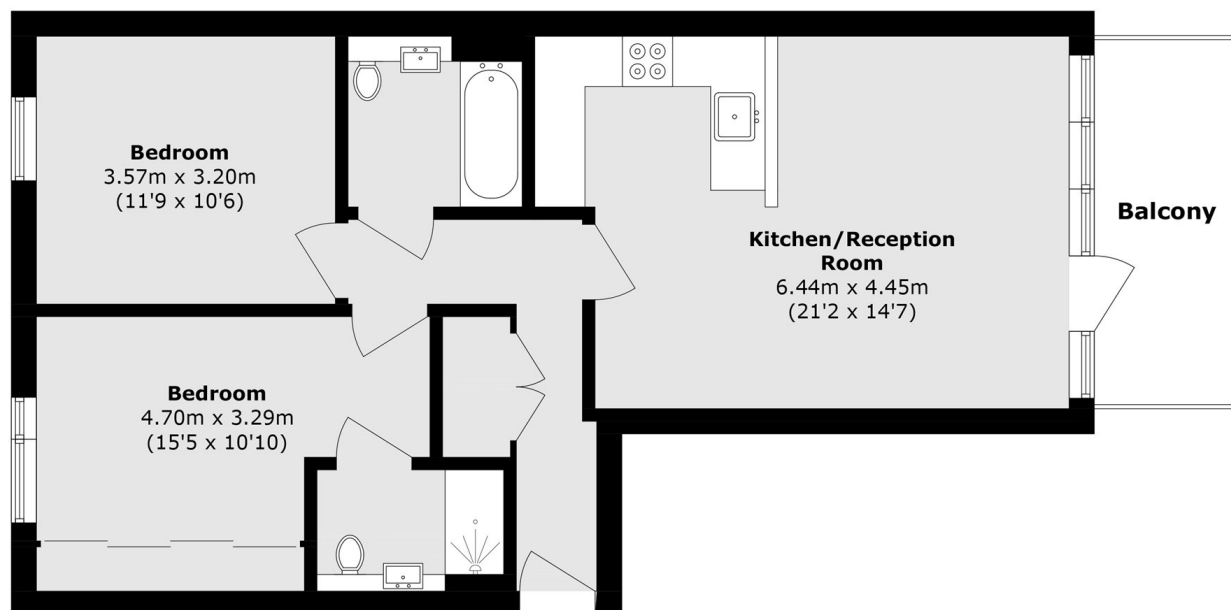
A two bedroom two bathroom apartment in this recently built development. It is ideal for access to Ealing Hospital, with a modern finish throughout, includes a large private balcony and secure off street parking available.

Located close to Ealing Hospital with bus links for easy access into Boston Manor station (Piccadilly Line), Ealing Broadway station (Central and District Line) and walking distance to Hanwell Station (Elizabeth Line)

Features

- Two Bedroom
- Open-Plan Reception
- Two Bathrooms
- Private Balcony
- New Build
- Off-Street Parking

Denman Avenue, Southall, UB2



Total area (approx.): 69.4 sq. m (747 sq. ft)
Balcony area (approx.): 7.4 sq. m (79.6 sq. ft)