



Kingsley Avenue, W13

£415 Per week

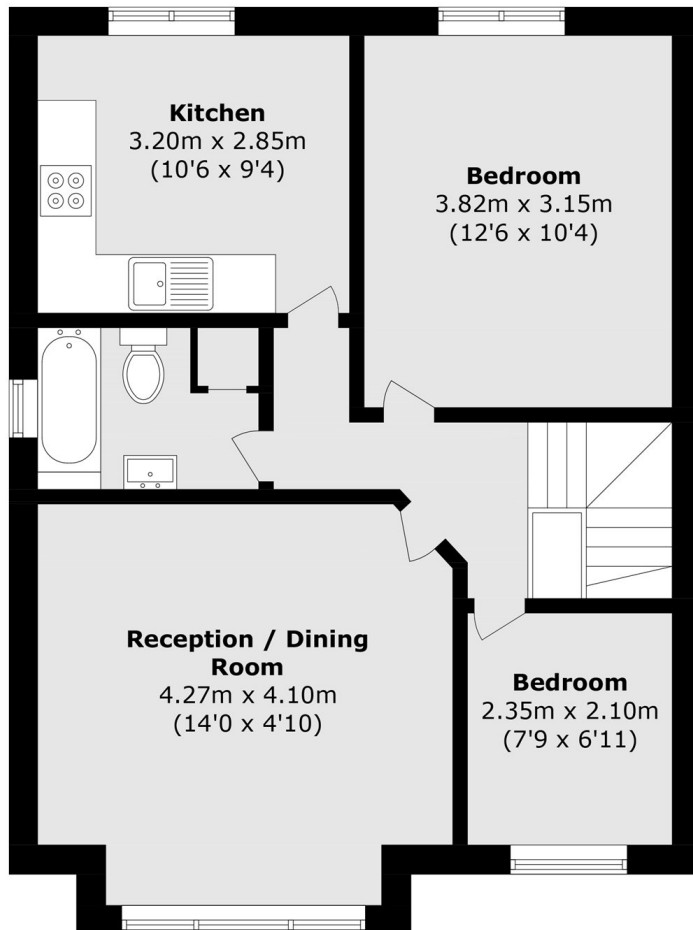
A first floor two double bedroom period conversion with its own private entrance. The property has high ceilings and period features throughout and is offered unfurnished.

Located parallel to Argyle Road on a tree-lined residential street with quick access to West Ealing Crossrail station and Cleveland Park.

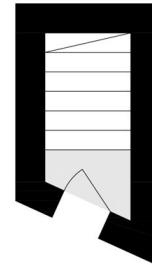
Features

- Two Bedrooms
- First Floor
- Own Entrance
- Period Conversion
- Unfurnished
- Double Glazing

Kingsley Avenue,
London, W13



First Floor



Ground Floor

Total area (approx.): 71.0 sq. m (764.2 sq. ft)