



## Chesham Terrace, W13

£975,000

Offers in Excess of £975,000. This beautifully presented three double bedroom Victorian end-of-terrace has been thoughtfully renovated by the current owners to an exceptional standard throughout.

Arranged over three floors and offering in excess of 1,100 sq.ft of living space, the home perfectly blends period character with contemporary design.

Ideally positioned for a choice of excellent local Primary and Secondary schools, and conveniently nestled between Northfields (Piccadilly Line) and West Ealing (Elizabeth Line) stations.

### Features

Beautiful Victorian Home  
Three Double Bedrooms  
Two Modern Bathrooms  
Tastefully Extended  
Close To Schools  
No Onward Chain



## Chesham Terrace, W13

The entrance hall leads to a bright open-plan kitchen and dining space with Crittall-style doors opening onto a landscaped rear garden.

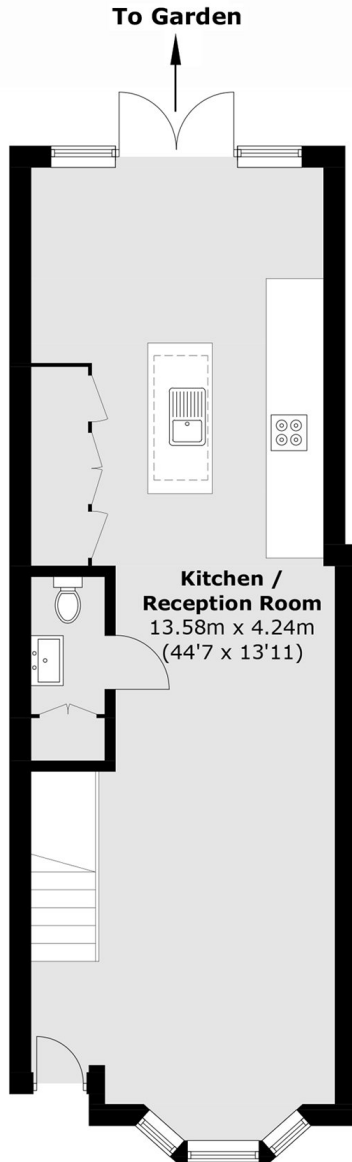
Upstairs offers two double bedrooms and a modern family bathroom, while the top floor hosts a stylish principal bedroom complete with en suite shower room.

This property is offered to the market with no onward chain and early viewing is highly recommended.

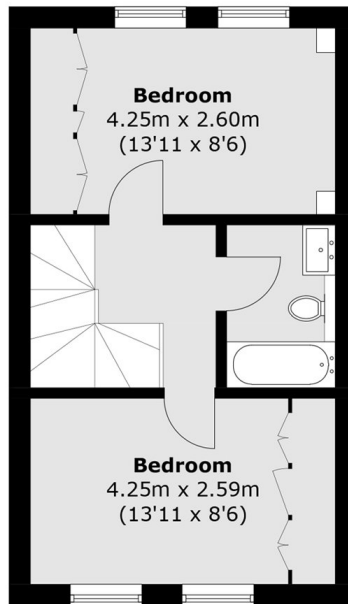




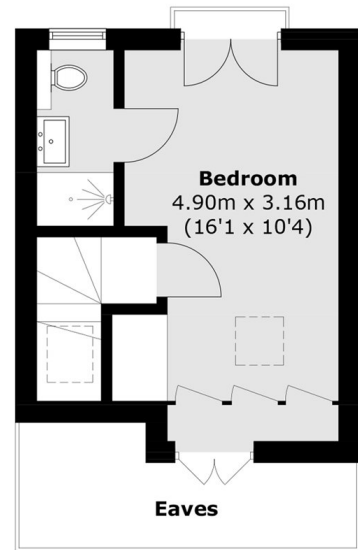
# Chesham Terrace, London, W13



**Ground Floor**



**First Floor**



**Second Floor**

Total area (approx.): 110.6 sq. m (1,190.4 sq. ft)  
(Excluding Eaves)