



Wordsworth Avenue, UB6

£415 Per week

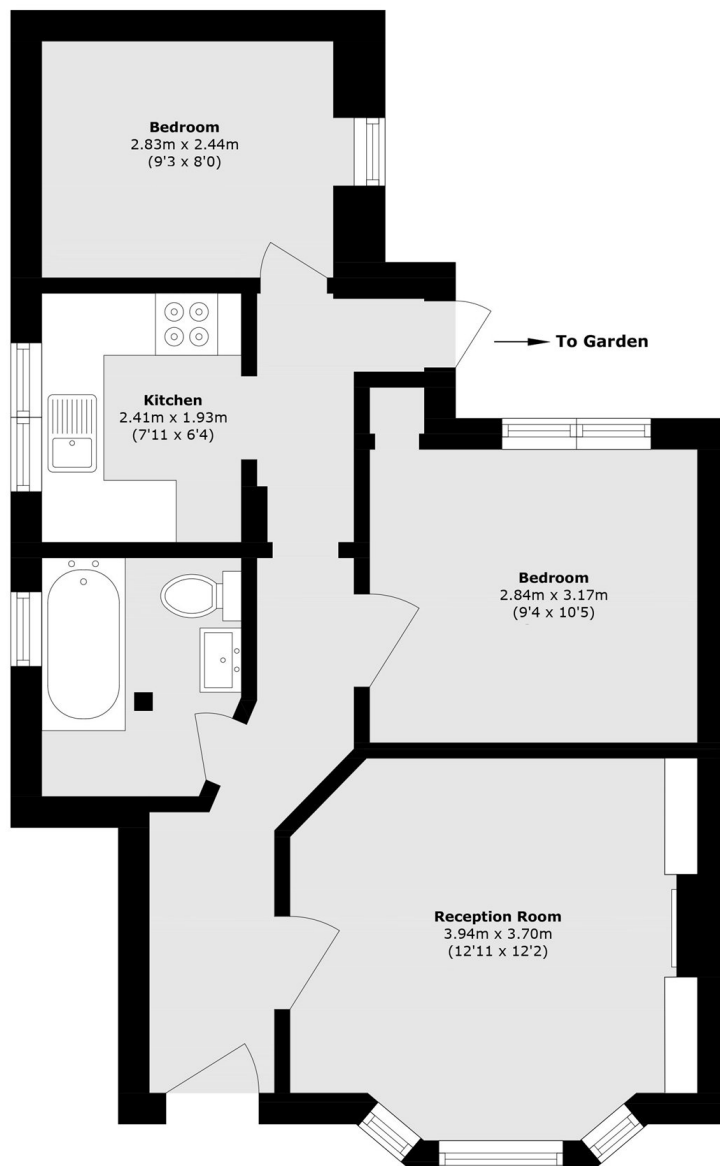
A two bedroom ground floor maisonette with a private garden. The two good sized bedrooms and separate reception make it perfect for a small family or sharers.

Situated on this quiet road under half a mile from Greenford Underground (Central Line). The area also offers local parks and excellent shopping facilities and bars.

Features

- Two Double Bedrooms
- Separate Kitchen
- Private Garden
- Free Parking
- Gas Central Heating
- Double Glazing

Wordsworth Avenue, Greenford, UB6



Total area (approx.): 50.4 sq. m (542.5 sq. ft)