



## Altenburg Avenue, W13

### £750,000

Edwardian two bedroom house set on the South side of one of the best roads on the West side of Northfields Avenue.

Priced to reflect the need for a complete programme of updating. The majority of neighbouring houses have been extensively extended to the rear and loft areas.

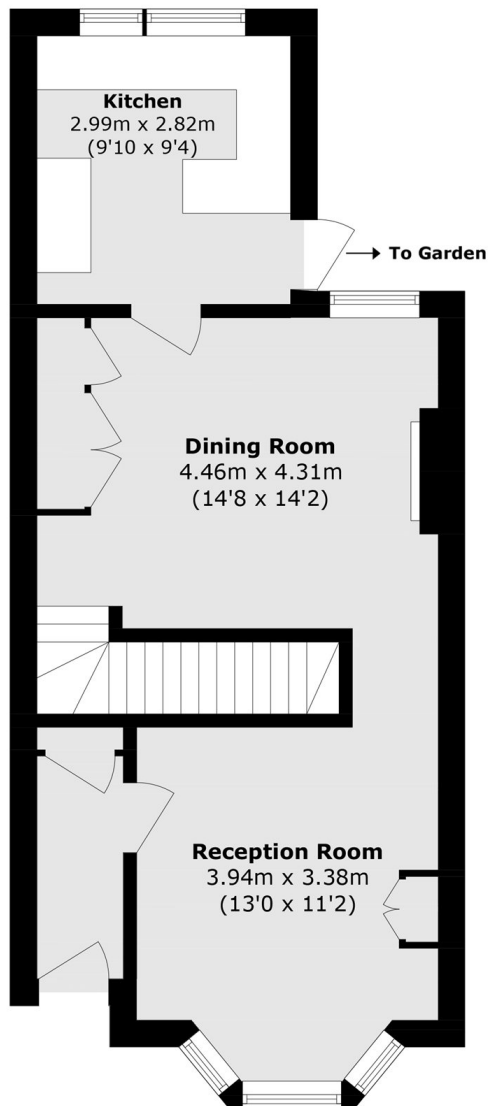
Benefits from a good sized South facing garden and no onward chain.

Located just off Northfields Avenue moments from Lammas Park and the Piccadilly line tube and ideally located for outstanding schools.

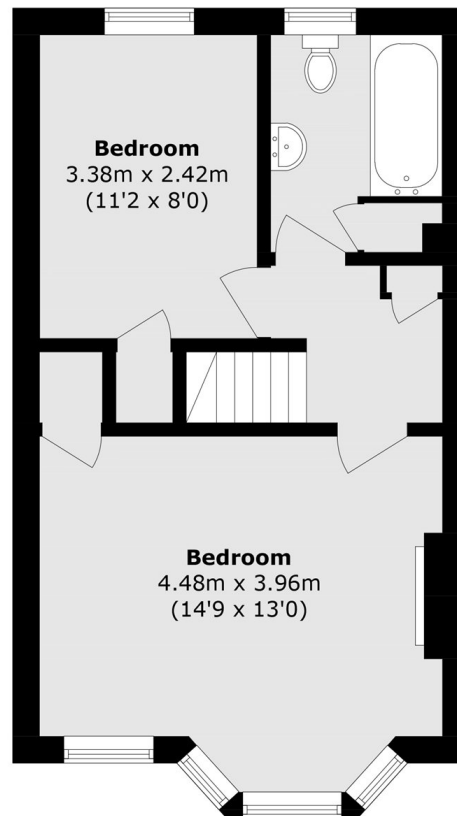
### Features

- Edwardian House
- South Facing Garden
- Renovation Opportunity
- Close to Tube
- Excellent School Catchment
- No Onward Chain

# Altenburg Avenue, London, W13



**Ground Floor**



**First Floor**

Total area (approx.): 80.4 sq. m (865.7 sq. ft)