



Dudley Gardens, W13

£651 Per week

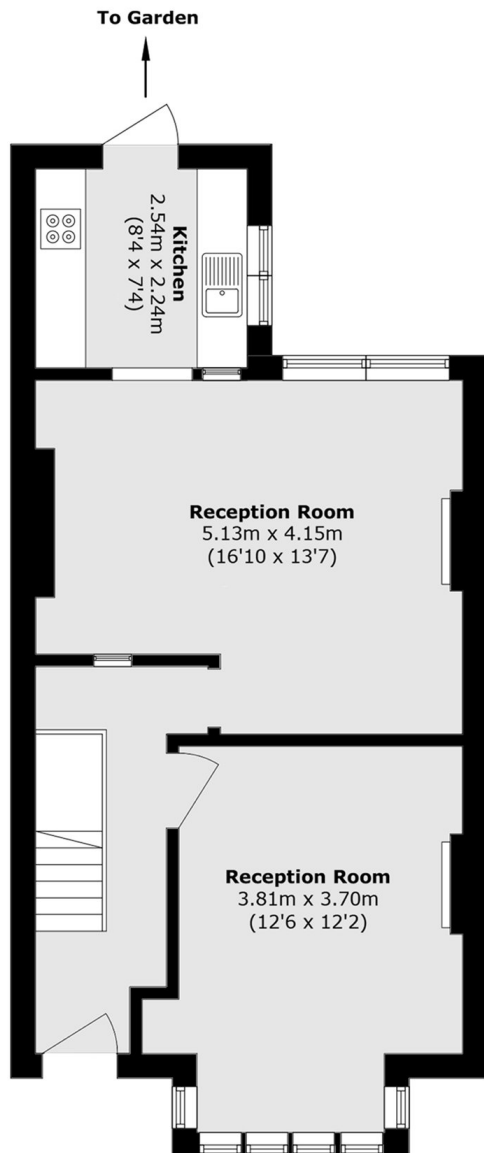
A well presented three bedroom house in the sought after Northfields which has three bedrooms, two receptions and a large low maintenance garden.

Situated on a popular Northfields road, moments from Northfield Avenue's shops, restaurants, and parks. Northfields Tube (Piccadilly Line) is 0.5 miles away, with West Ealing Station just 0.6 miles away.

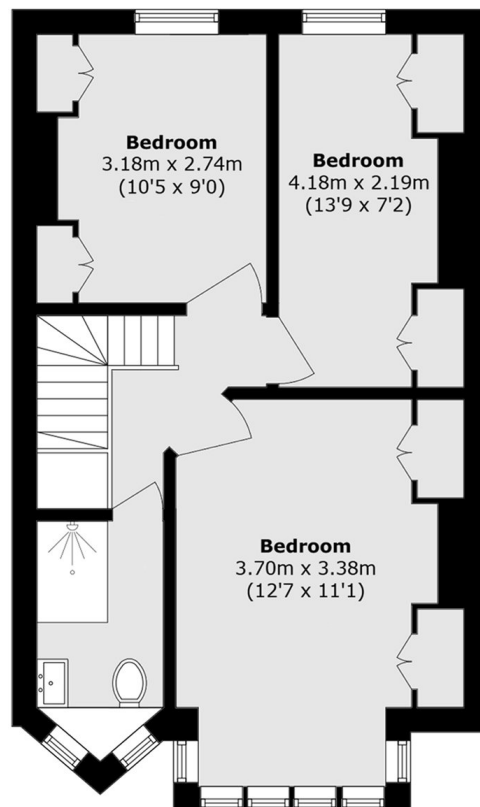
Features

- Three Bedrooms
- Two Receptions
- Recently Refurbished
- Private Garden
- 1GB Internet Speed Included
- Unfurnished

Dudley Gardens, London, W13



Ground Floor



First Floor

Total area (approx.): 93.6 sq. m (1007.5 sq. ft)