



Windmill Road, W5

£425,000

A spacious two bedroom first floor flat with allocated private parking.

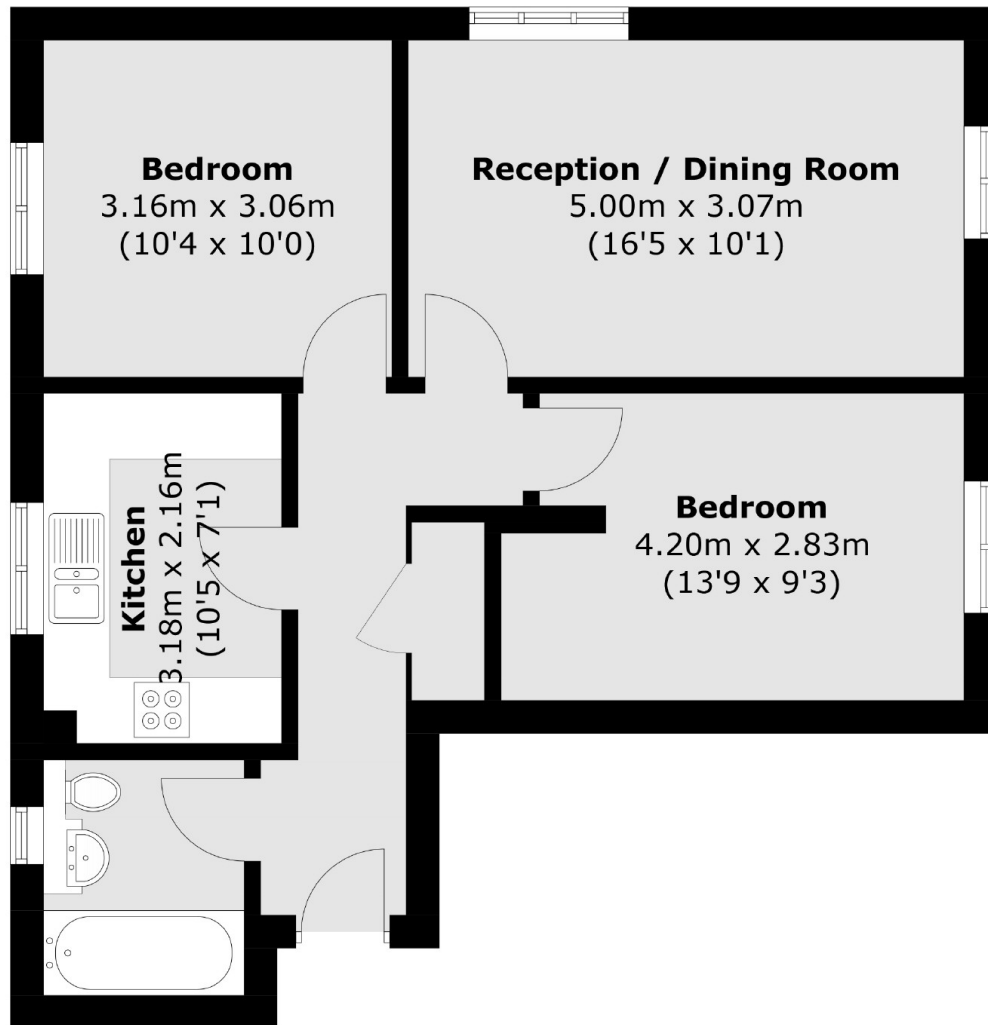
Also comprises of Entrance hall with storage, modern fitted kitchen and bathroom.

Set in this small development off Windmill Road, the property is close to Northfields Station for the Piccadilly line and offered with no onward chain.

Features

- Two Double Bedrooms
- Long Lease
- Allocated Parking
- Quiet Location
- Good Transport Links
- No Onward Chain

Windmill Road,
London, W5



Total area (approx.): 58.0 sq. m (624.3 sq. ft)