



Coldershaw Road, W13

£507 Per week

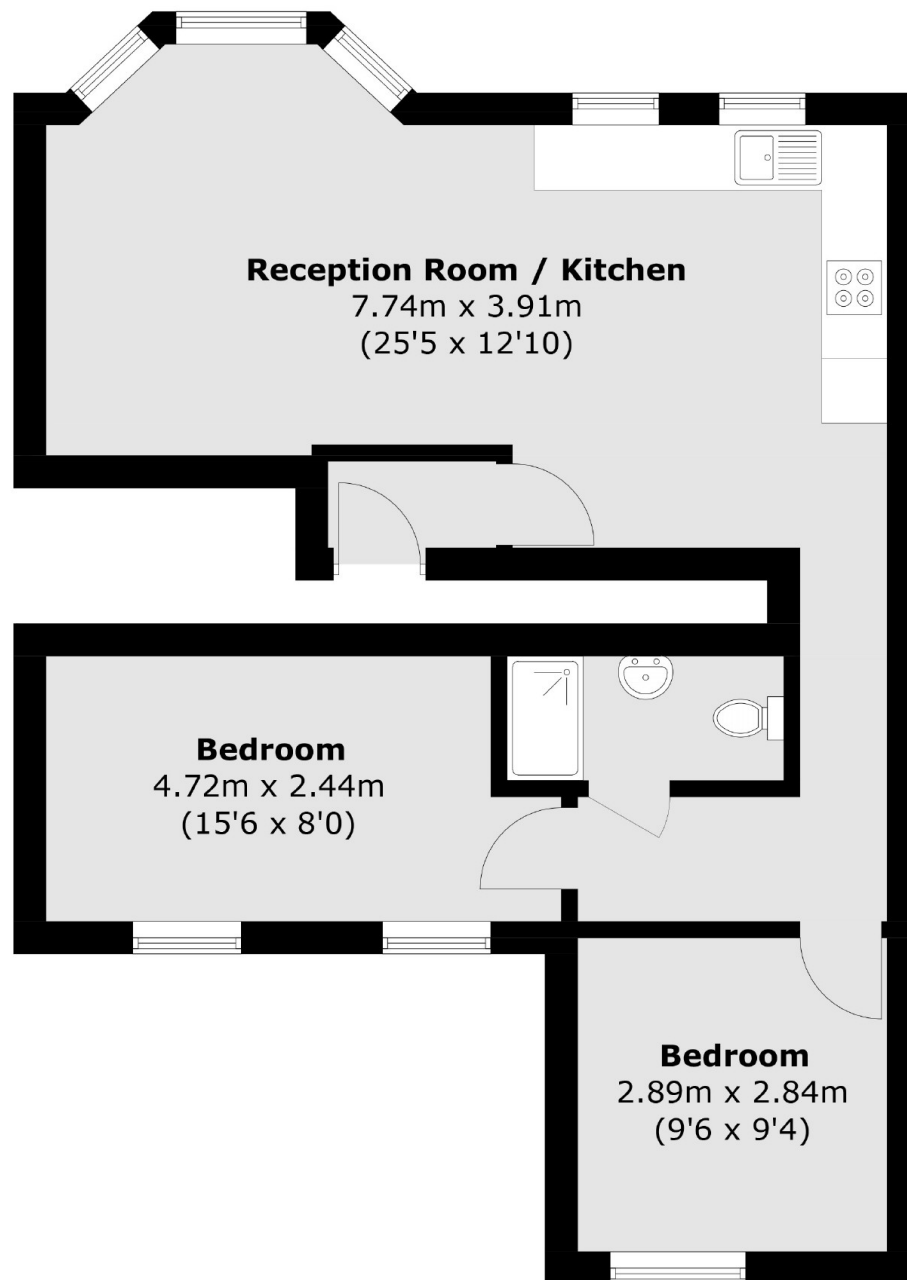
Recently built two-bedroom flat, finished to the highest standard. The property is spacious throughout making it a great option for a couple or professional sharers.

Well located, just under a mile away from West Ealing station and also just over a mile from Northfields station. Also ideally located for the local parks and shopping facilities of West Ealing's Broadway.

Features

Newly Built
Modern Throughout
Two Bedrooms
First Floor Flat
Close to Station
Unfurnished

Coldershaw Road,
London, W13



Total area (approx.): 58.3 sq. m (627.5 sq. ft)

Dexters

Northfields
140 Northfield Avenue
London
W13 9SB
Lettings
020 8545 8589

Energy Rating: C. We aim to make our particulars both accurate and reliable. However they are not guaranteed; nor do they form part of an offer or contract. If you require clarification on any points then please contact us, especially if you're traveling some distance to view. Please note that appliances and heating systems have not been tested and therefore no warranties can be given as to their good working order.

 **RICS** | Regulated
Estate Agent
and Letting Agent

[dexters.co.uk](https://www.dexters.co.uk)