



Holly Park Road, W7

£715 Per week

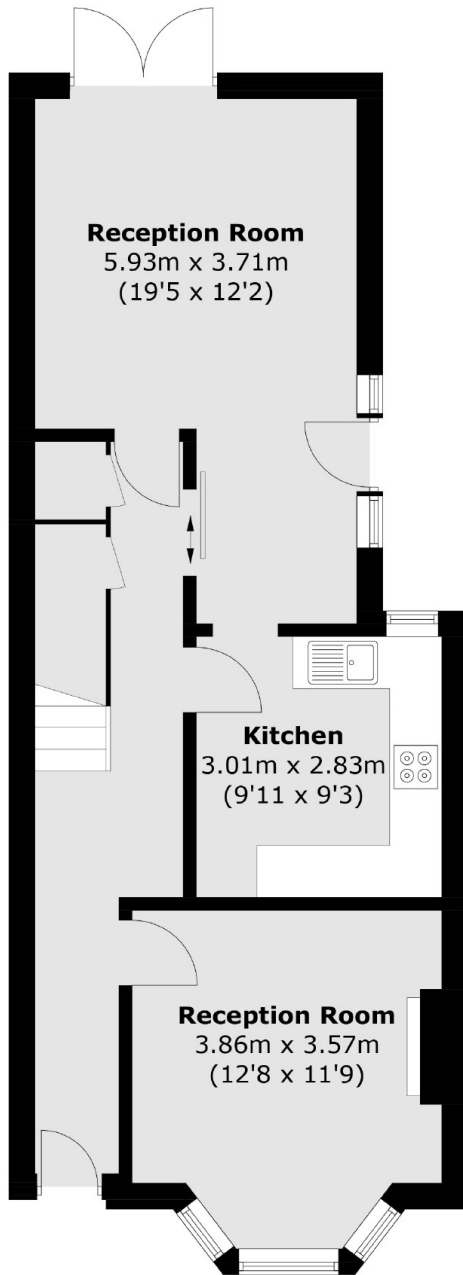
A three bedroom home full of charm and period features. This property has two reception rooms, one of which is open plan and leads onto a large private garden perfect for the warm summer months.

Ideal for a family looking for convenience and quiet surroundings being located on a cul-de-sac under half a mile to Hanwell Station and the local shops.

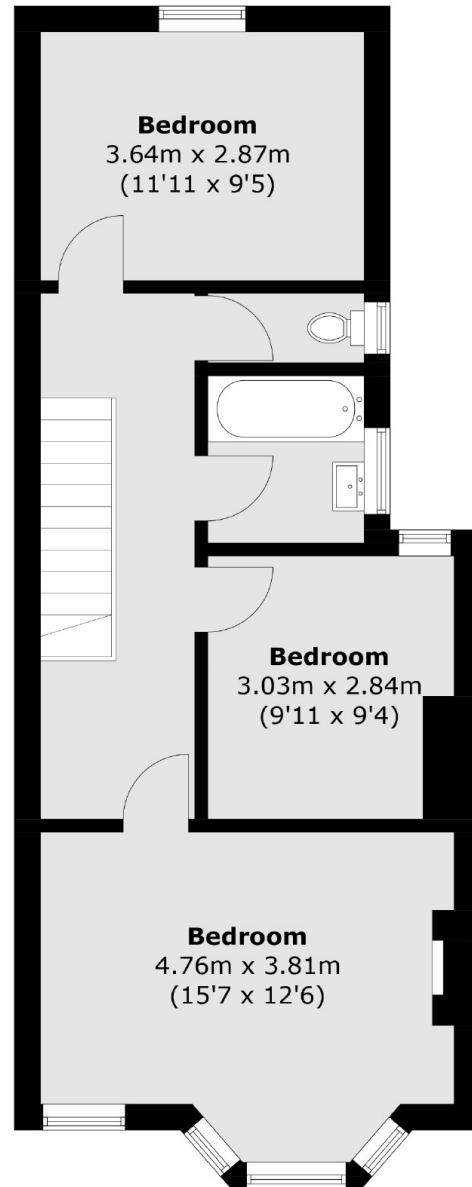
Features

- Three Bedrooms
- Wood Flooring
- Two Reception Rooms
- Recently Refurbished
- Open Plan Kitchen
- Private Garden

Holly Park Road, London, W7



Ground Floor



First Floor

Total area (approx.): 108.3 sq. m (1,165.7 sq. ft)