



Knowsley Avenue, UB1

£576 Per week

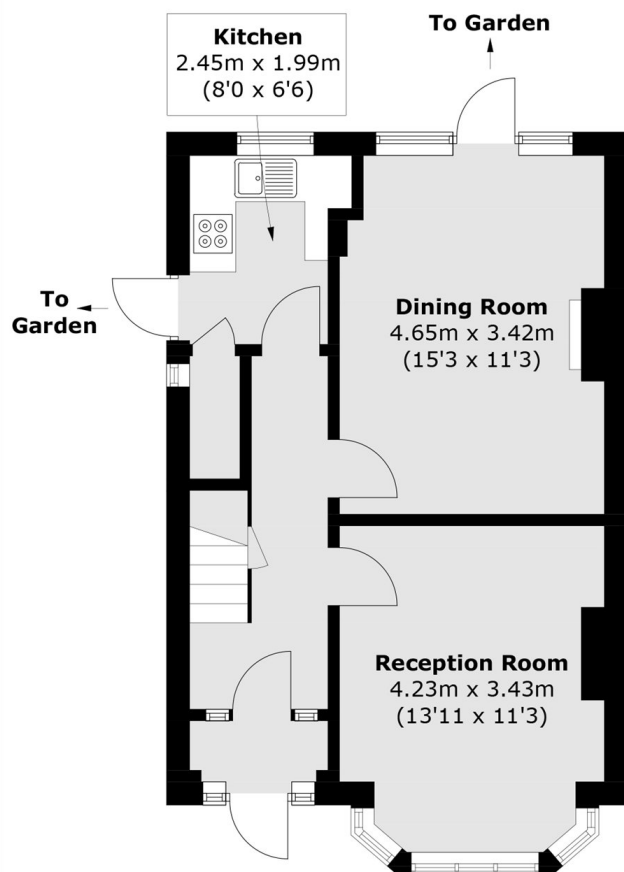
A spacious three bedroom home full of charm, featuring two reception rooms and a separate kitchen with access to the garden, ideal for entertaining.

Located on a quite residential street, close to the Uxbridge Road with great bus links for access into Boston Manor and Ealing Broadway's shops and restaurants.

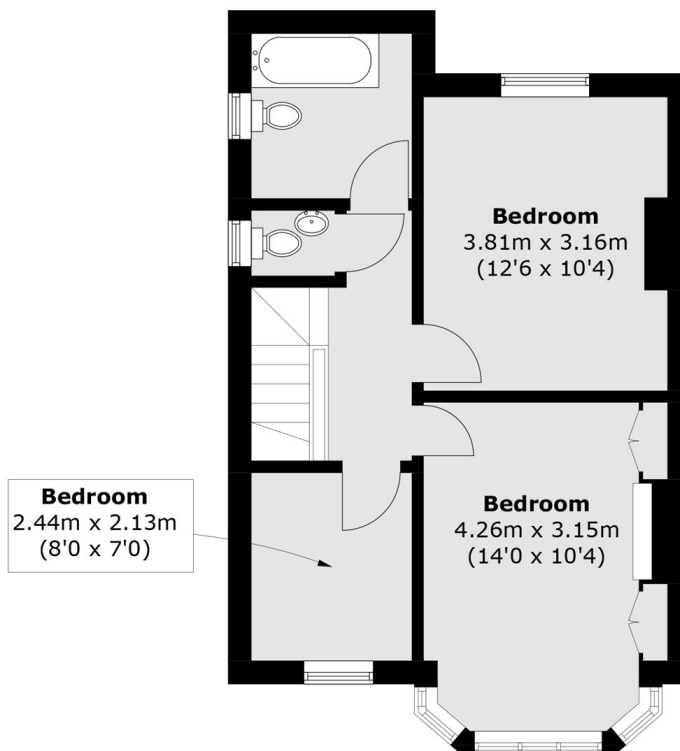
Features

- Three Bedrooms
- Two Receptions
- Private Garden
- Off Street Parking
- Gas Central Heating
- Double Glazing

Knowsley Avenue, Southall, UB1



Ground Floor



First Floor

Total area (approx.): 89.5 sq. m (963.4 sq. ft)