



## Manor Vale, TW8

### £450,000

An impressive two double bed split level apartment. With its own front door, this really has the feel of a house with the bedrooms and bathroom upstairs.

Also consists of an entrance hall with storage, a well fitted kitchen/breakfast room and a good sized living room.

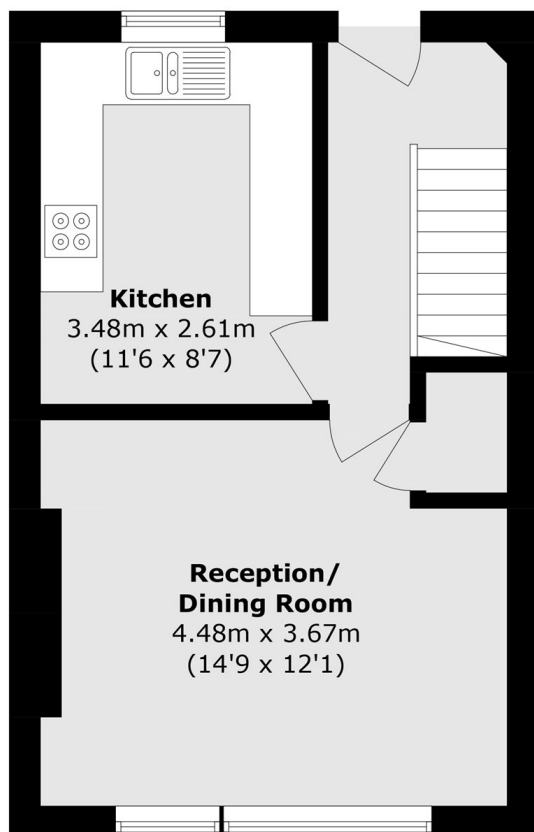
Manor Vale is located close to Boston Manor Park, Boston Manor Piccadilly line station and within walking distance to Brentford station with direct train to Waterloo.

There are excellent transport links to Chiswick, Kew, Northfields and Ealing. Offered with long lease and no onward chain.

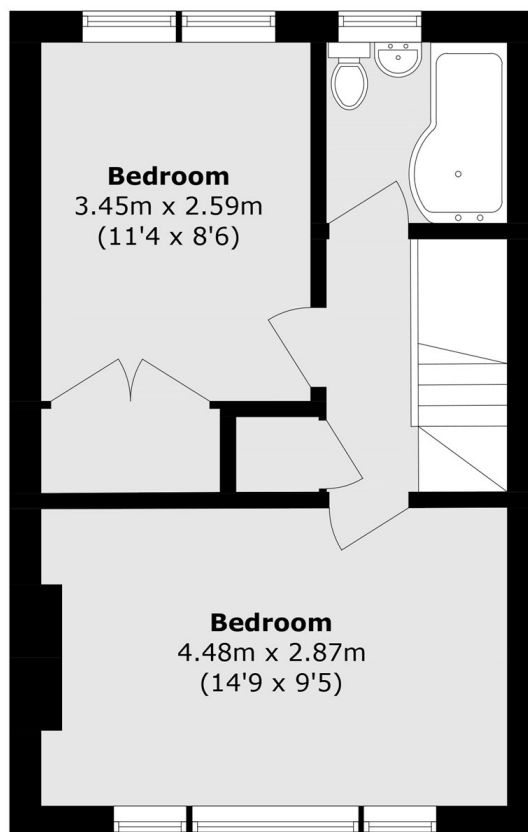
### Features

- Purpose Built
- Two Bedrooms
- Maisonette
- Gas Central Heating
- Communal Gardens
- Good Transport Links

# Manor Vale, Brentford, TW8



**First Floor**



**Second Floor**

Total area (approx.): 65.8 sq. m (707.9 sq. ft)