



Windmill Road, W5

£875,000

Spacious three bedroom Edwardian house with a West facing garden. Also comprises of two reception rooms, a ground floor shower room and bathroom. Many neighbouring houses have been extensively extended to the rear and loft.

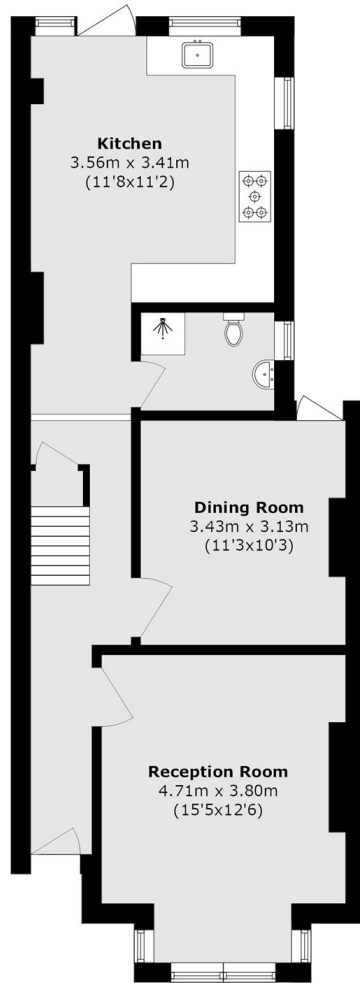
Located between Northfields station for the Piccadilly line and Brentford station for Waterloo. Close to an excellent range of schools.

Offered with vacant possession and ready for a purchaser to just move in and unpack.

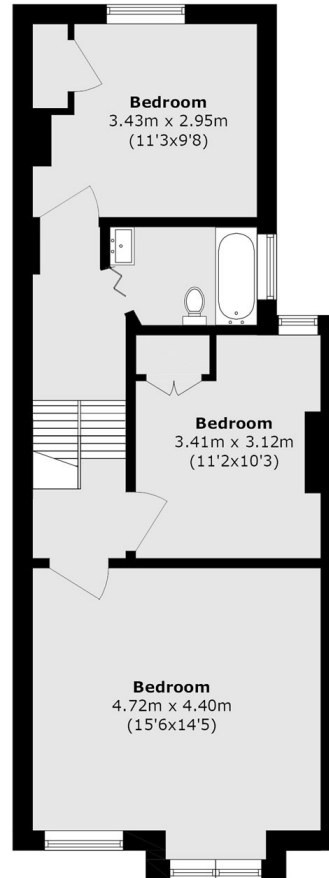
Features

- Edwardian House
- West Facing Garden
- Scope for Extension
- Good Condition
- Excellent Schools
- No Onward Chain

Windmill Road, London, W5



Ground Floor



First Floor

Total area (approx.): 104.8 sq. m (1128.1 sq. ft)