



Darwin Road, W5

£550,000

A spacious first floor three bedroom maisonette located in this popular spot in South Ealing which benefits from a private entrance.

Share of freehold approved planning permission to convert the loft and add two further bedrooms.

Situated close to both Brentford Overground station for Waterloo and Northfields station for the Piccadilly line.

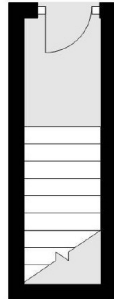
Offered in good condition and with no onward chain.

Features

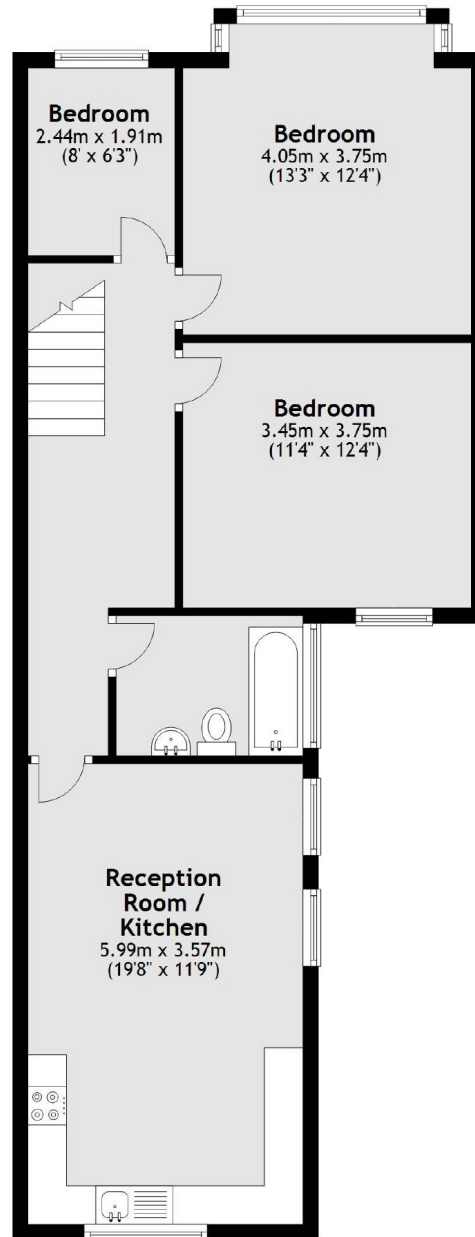
Edwardian Maisonette
Three Bedrooms
Share of Freehold
Good Condition
Chain Free
Approved plan for loft conversion

Darwin Road, London, W5

Ground Floor



First Floor



Total area: approx. 74.1 sq. metres (797.8 sq. feet)

Dexters

Northfields
140 Northfield Avenue
London
W13 9SB
Sales
020 8545 8588

Energy Rating: C. We aim to make our particulars both accurate and reliable. However they are not guaranteed; nor do they form part of an offer or contract. If you require clarification on any points then please contact us, especially if you're traveling some distance to view. Please note that appliances and heating systems have not been tested and therefore no warranties can be given as to their good working order.

 **RICS** | Regulated
Estate Agent
and Letting Agent

[dexters.co.uk](https://www.dexters.co.uk)