



Bannister Close, UB6

£415 Per week

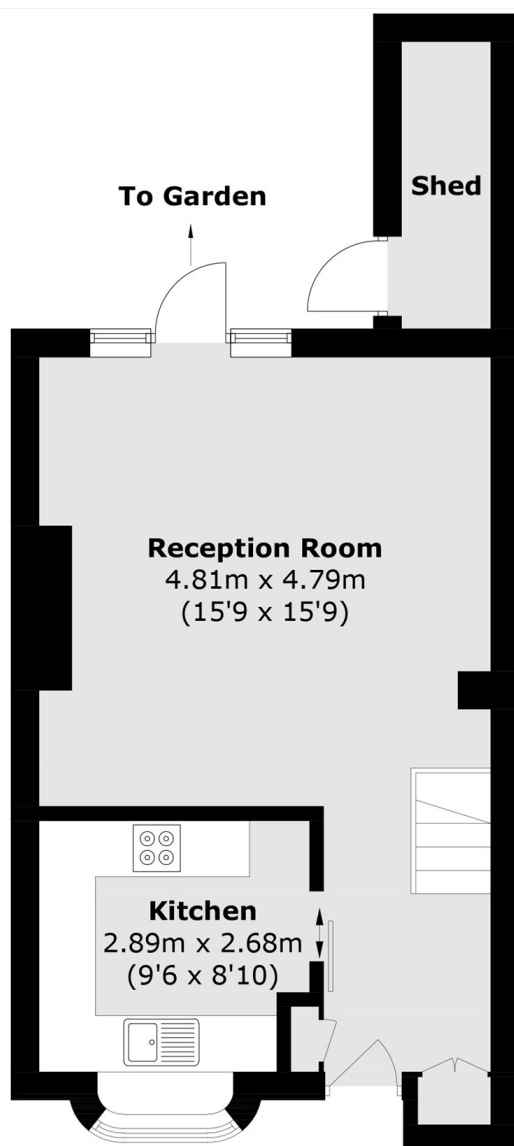
Recently renovated two bedroom house featuring a modern bathroom, spacious living areas, good sized garden, and convenient off street parking, ideal for family or professional sharers.

Bannister Close offers excellent transport links, nearby shops, schools, green spaces, and easy access to A40, A406, and central London via public transport and local amenities, nearby parks.

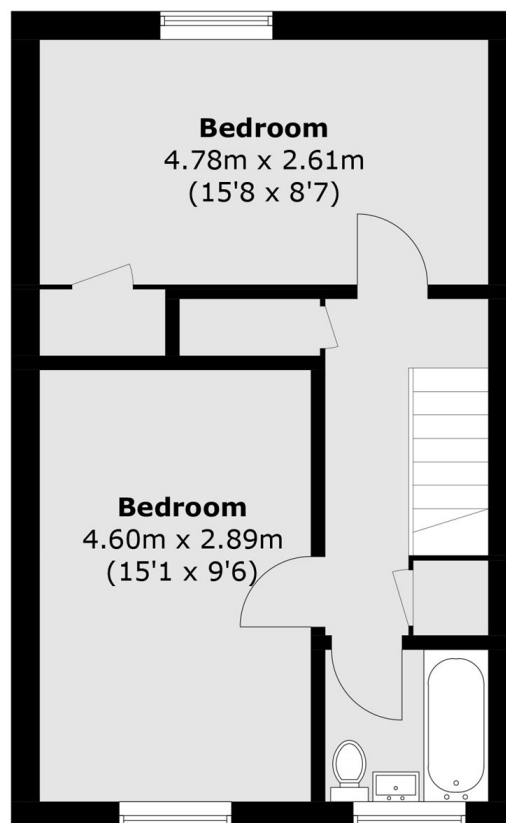
Features

- Two Bedroom House
- Recently Redecorated
- Off-Street Parking
- Private Garden
- Modern Bathroom
- Unfurnished

Bannister Close, Greenford, UB6



Ground Floor



First Floor

Total area (approx.): 76.1 sq. m (819.0 sq. ft)
(Excluding External Shed)