



Trent Avenue, W5

£1,400,000

****Price Guide****

An Edwardian four bedroom semi detached house nestled in this excellent location between Northfields and South Ealing.

Extended to the rear and loft areas to provide excellent living space including a stylish open plan kitchen with full width bi fold doors.

Set on a generous wide plot with a fantastic circa 70ft rear garden.

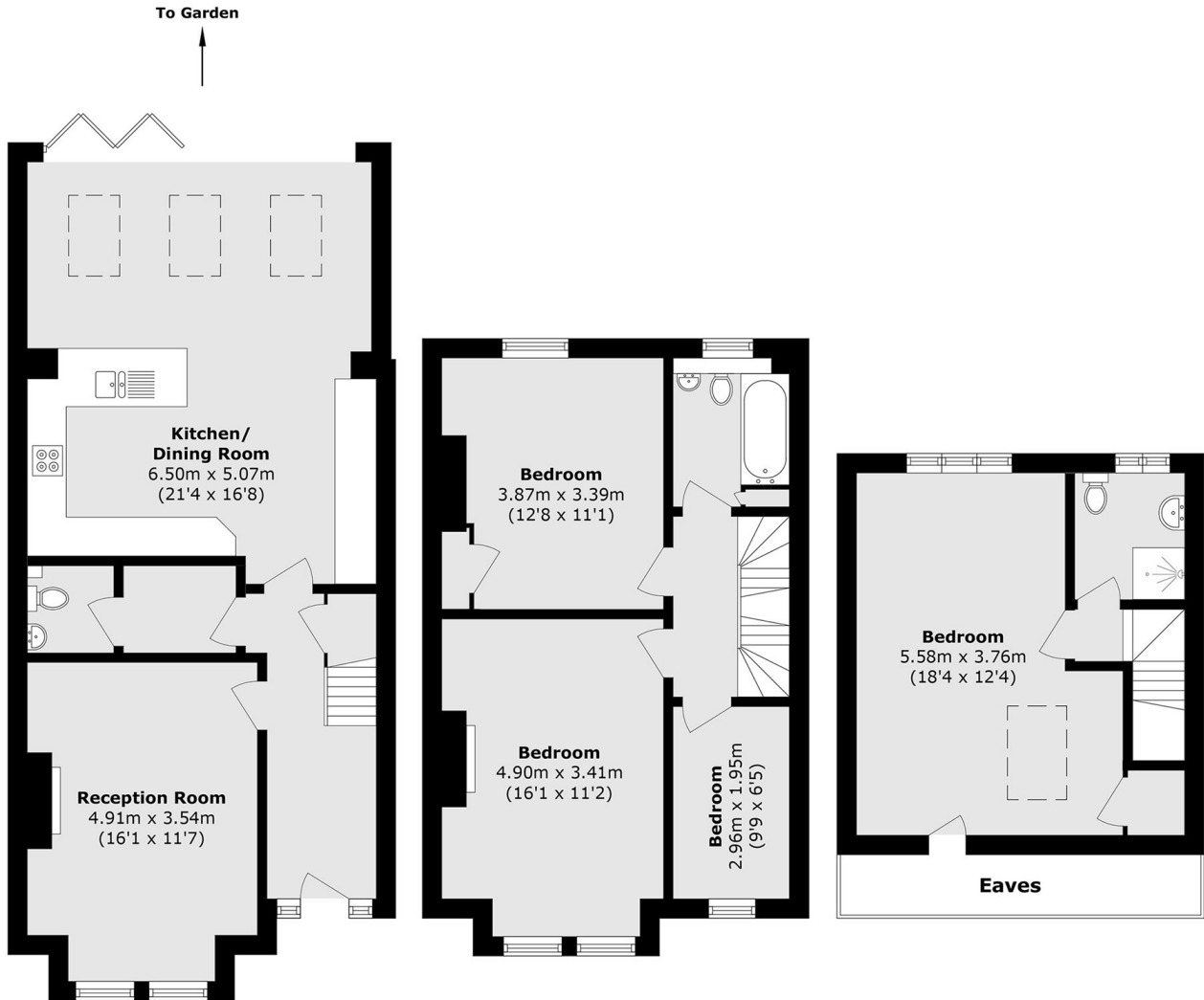
Located close to the Piccadilly line and well positioned for outstanding local shops.

Offered with no onward chain, early viewing is strongly recommended.

Features

Edwardian Semi Detached
Fully Extended
Close to Tube
70 ft. Rear Garden
Excellent School Catchment
No Onward Chain

Trent Avenue, London, W5



Ground Floor

First Floor

Second Floor

Total area (approx.): 138.4 sq. m (1489.7 sq. ft)
(Excluding Eaves)