



## Shirley Gardens, W7

£426 Per week

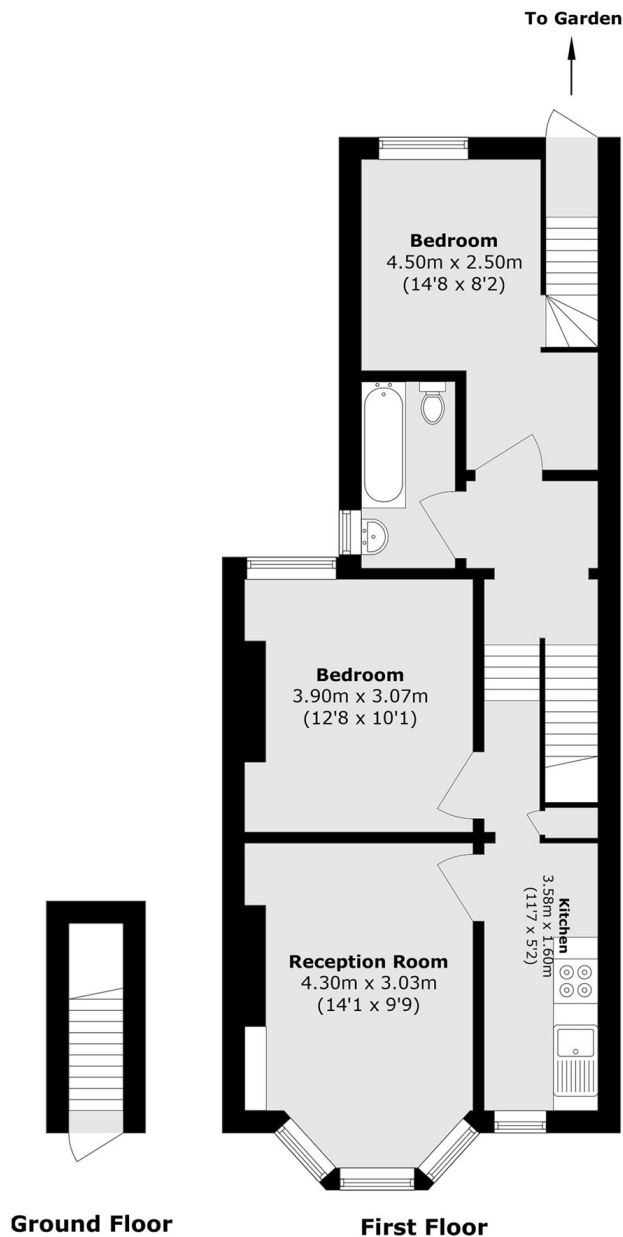
A two bedroom first floor apartment ideal for a professional couple. Impressively decorated with contemporary elegance and offers plenty of storage and a private garden.

This period property is ideally located just under a mile from Hanwell Station. The surrounding parks and friendly village pubs make this a desirable location.

### Features

Two Bedrooms  
First Floor Flat  
Modern Kitchen  
Gas Central Heating  
Private Garden  
Close to Station

# Shirley Gardens, London, W7



Total area (approx.): 55.1 sq. m (593.1 sq. ft)

## Dexters

Northfields  
140 Northfield Avenue  
London  
W13 9SB  
Lettings  
020 8545 8589

Energy Rating: C. We aim to make our particulars both accurate and reliable. However they are not guaranteed; nor do they form part of an offer or contract. If you require clarification on any points then please contact us, especially if you're traveling some distance to view. Please note that appliances and heating systems have not been tested and therefore no warranties can be given as to their good working order.

 **RICS** | Regulated  
Estate Agent  
and Letting Agent

[dexters.co.uk](https://www.dexters.co.uk)