



Jefferson Close, W13

£550,000

This two bedroom house is an excellent opportunity to buy a freehold in the heart of Northfields.

Priced to reflect the need for updating so ideal for a purchaser to put their own stamp on their home.

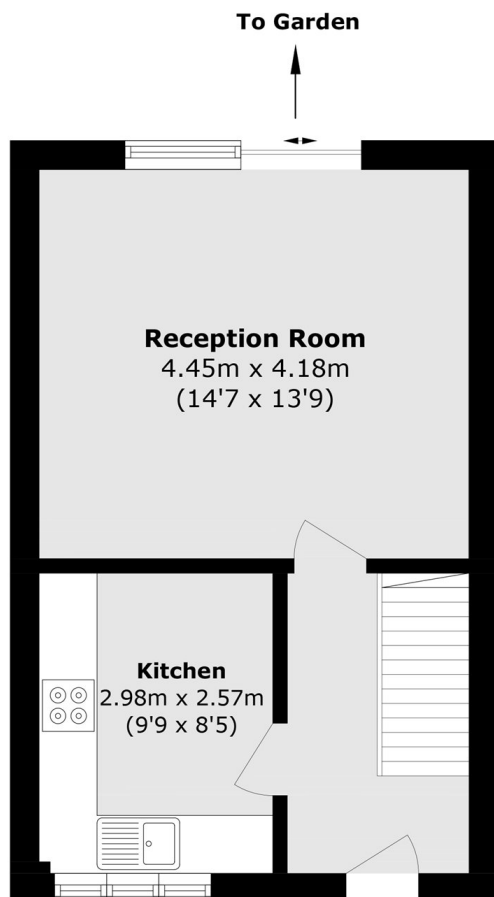
Set in a sought after spot close to the Piccadilly line station at Northfields and the interesting mix of local independent shops and cafés.

Benefits from allocated parking and no onward chain.

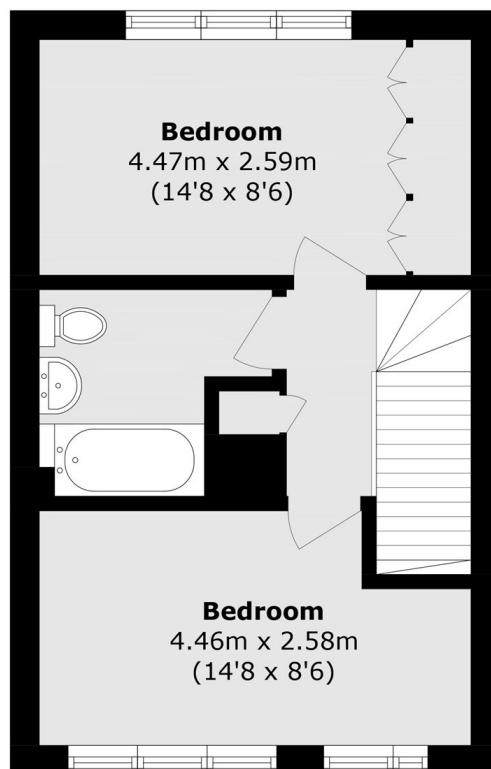
Features

- Two Bedroom House
- Freehold
- Excellent Schools
- Allocated Parking
- South Facing Garden
- No Onward Chain

Jefferson Close, London, W13



Ground Floor



First Floor

Total area (approx.): 65.1 sq. m (700.7 sq. ft)