



Broadway, W13

£2,600 Per calendar month

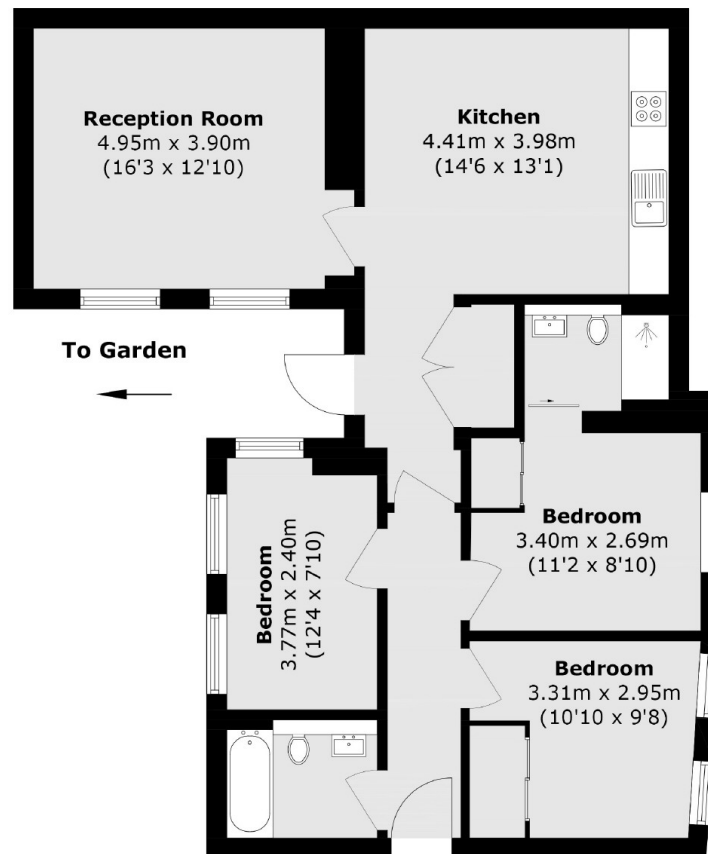
A stunning four bedroom apartment in this exciting development. The flat offers four double bedrooms, outside decking area, an open-plan reception and additional storage.

A quarter of a mile from West Ealing Station, this property is just a 3 minute train from Ealing Broadway (central line) and just over half a mile from West Ealing's Elizabeth Line.

Features

- Four Bedrooms
- Outside Space
- Newly Refurbished
- Open Plan Kitchen
- Close to Station
- Local Amenities

Broadway, London, W13



Total area (approx.): 89.2 sq.m (960.1 sq. ft)