



Manuka Close, W7

£3,500 Per calendar month

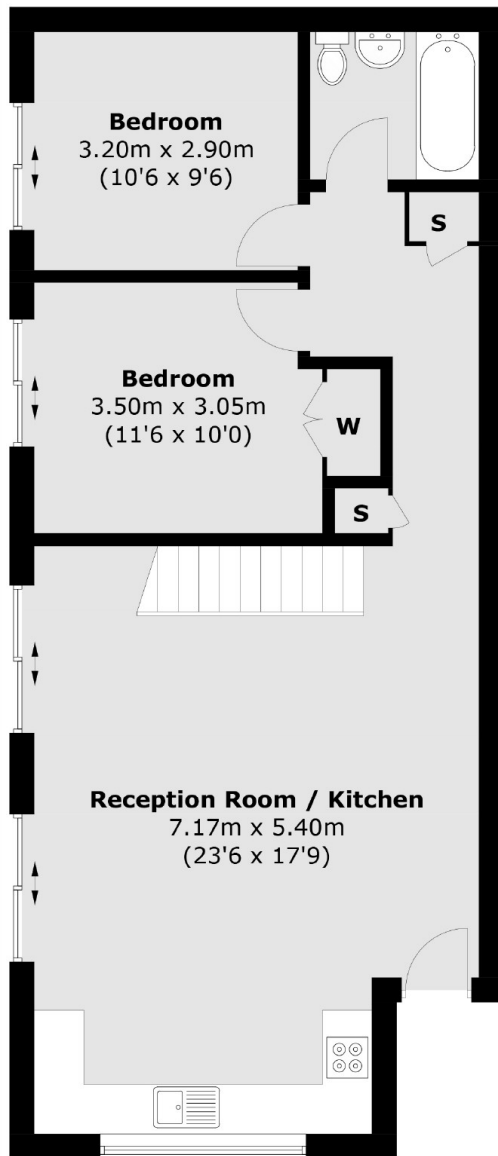
A truly unique and contemporary four bedroom detached house. Offering four double bedrooms and a large bright lounge with modern open plan kitchen leading out to a decked garden.

Located in a quiet cul-de-sac less than a mile from West Ealing station. Manuka Close is moments away from the Uxbridge Road which offers excellent bus links to both Ealing Broadway and Northfields Station.

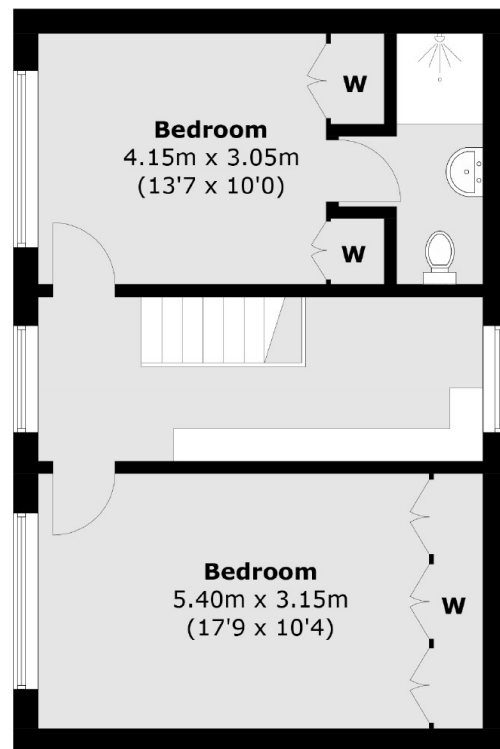
Features

- Four Double Bedrooms
- Ultra Modern Style
- Parking Space
- Private Patio Garden
- Gas Central Heating
- Furnished

Manuka Close, London, W7



Ground Floor



First Floor

Total area (approx.): 116.6 sq. m (1,255.0 sq. ft)