



Princes Road, W13

£375,000

Garden conversion flat located in this quiet road close to Walpole Park.

Comprises entrance hall, double bedroom, kitchen, bathroom and a spacious lounge which leads out to a private South facing garden.

Conveniently located within walking distance of West Ealing Elizabeth line station with multiple choice of shopping and transport at Northfields and Ealing Broadway.

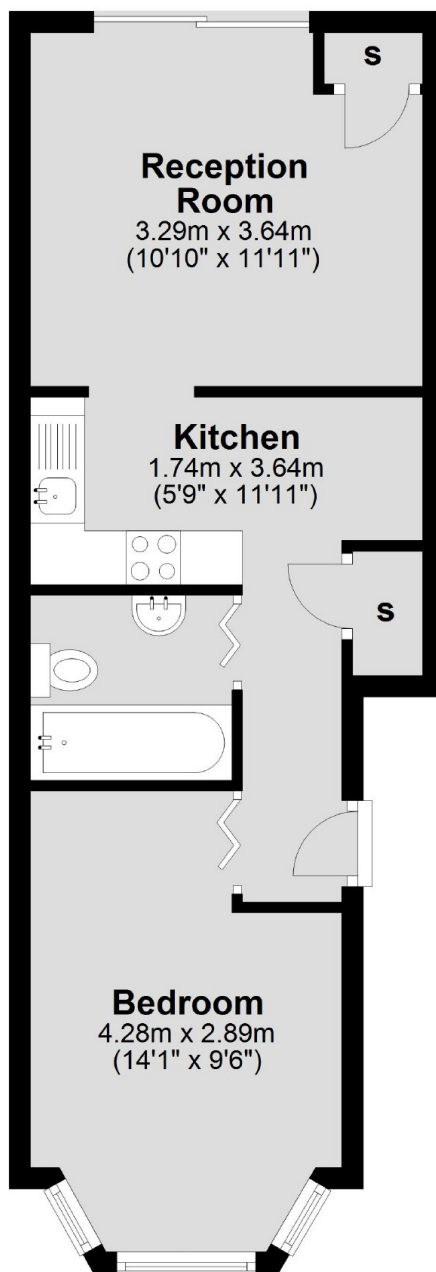
Offered with no onward chain.

Features

- Garden Flat
- One Bedroom
- Close to Parks
- Near Elizabeth Line
- Long Lease
- No Onward Chain

**Princes Road,
London, W13**

Ground Floor



Total area: approx. 36.5 sq. metres (392.8 sq. feet)