



Elers Road, W13

£2,250,000

This semi detached six bedroom house offers over 3100 sq.ft and benefits from a truly amazing garden.

On arrival, you will be impressed with this imposing house with ample forecourt parking. The entrance porch leads through to a wide central reception hall.

The ground floor alone is more spacious than many local houses and offers six receptions in addition to the kitchen, utility room, an extra bedroom/ office and a guest WC with a shower.

Features

- Six Bedrooms
- 3100 Sq.Ft
- Outstanding Garden
- Convenient Location
- Adjacent to Lammas Park
- Excellent Schools



Elers Road, W13

On the two up per floors, there are the five good sized bedrooms and two bathrooms.

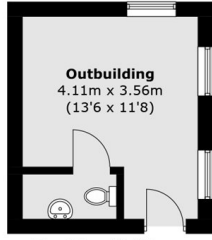
A key feature of this property is the huge garden, which for the right buyer, makes this the ideal long term home.

Located in this most favoured Northfields spot just moments from Lammas Park, the interesting mix of local independent shops and cafés and Piccadilly line stations.

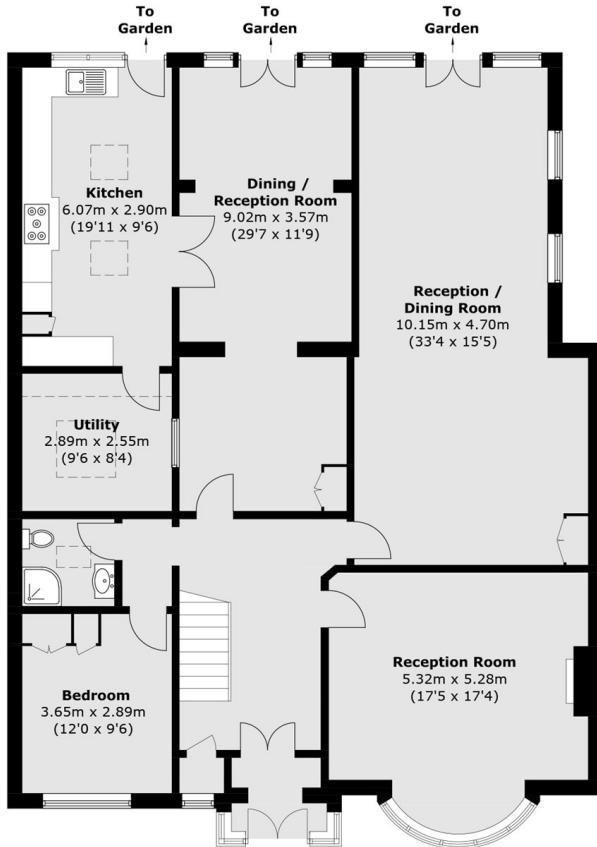
Well positioned for much sought after schools including Fielding and Mount Carmel Primaries and Elthorne Park High School.



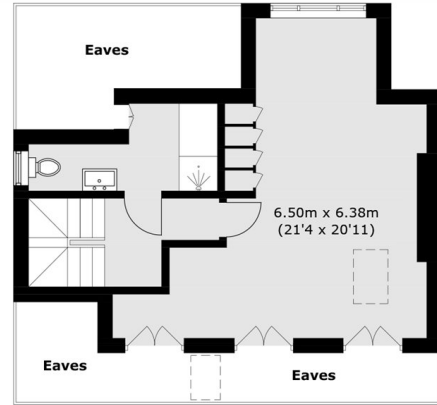
Elers Road, London, W13



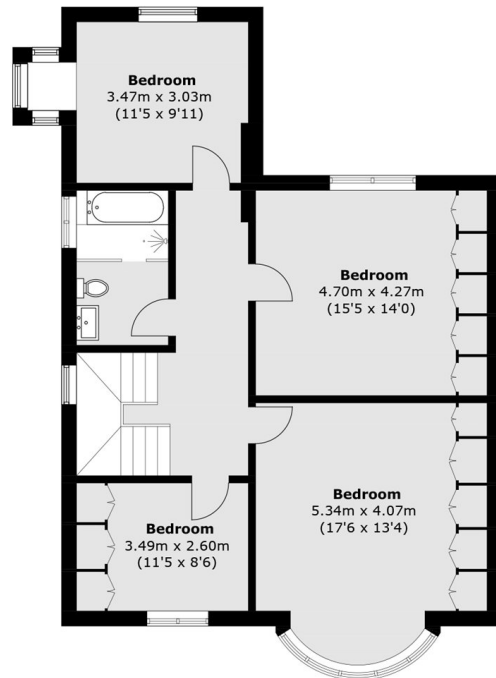
Outbuilding
(Not Shown In Actual
Location / Orientation)



Ground Floor



Second Floor



First Floor

Total area (approx.): 293.3 sq. m (3,157.1 sq. ft)
Outbuilding: 14.7 sq. m (158.2 sq. ft)
(Excluding Eaves)