



Copley Close, W7

£275,000

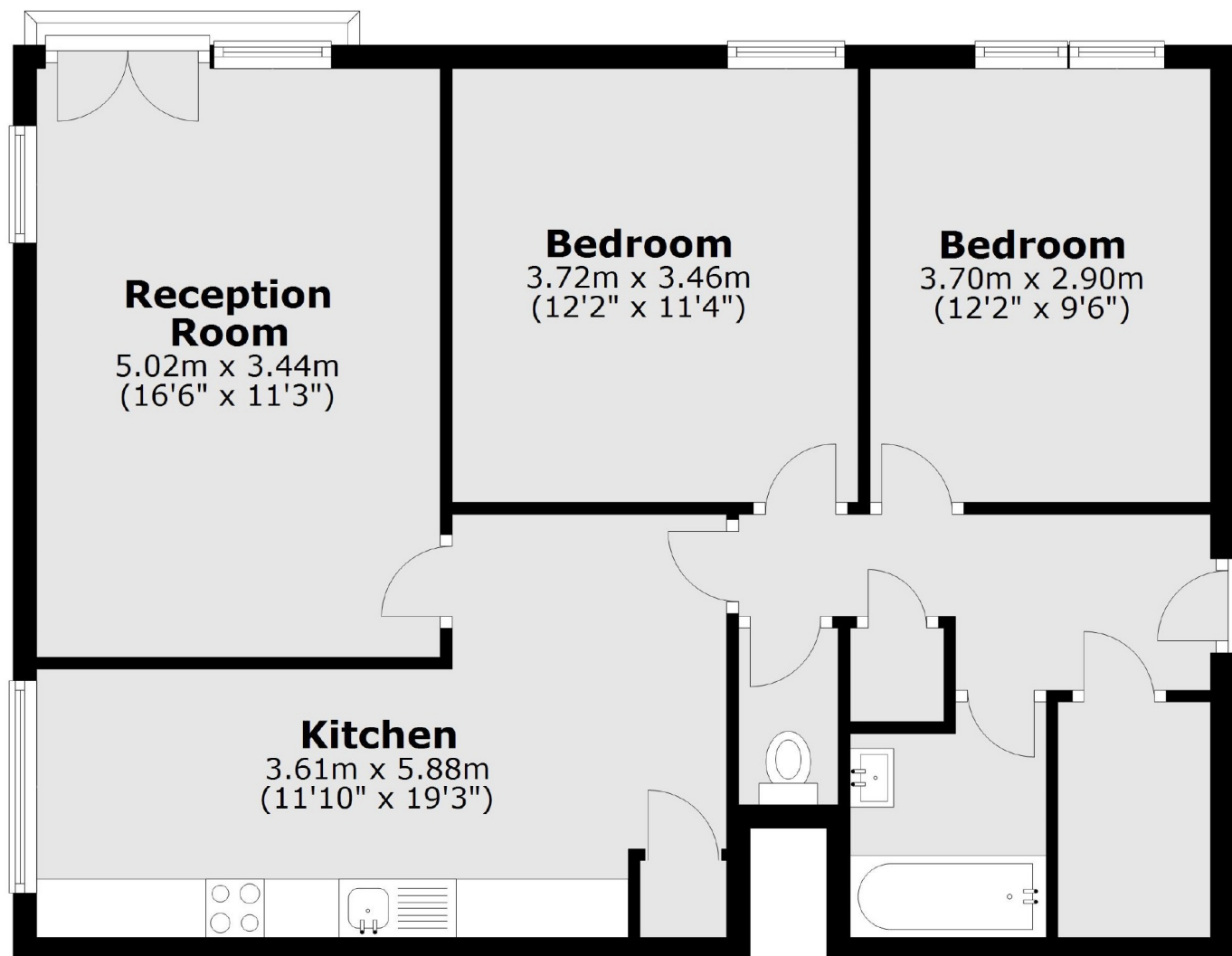
A two double bedroom top floor apartment within a conveniently located purpose built block. In good condition throughout, the property presents a great first time buy or buy to let investment. There is a bright and spacious reception room and a separate kitchen.

Copley Close is ideally located for access to Castle Bar Park overground station, granting direct access to Ealing Broadway's array of amenities. There are also multiple green spaces within close proximity.

Features

- Two Bedrooms
- Top Floor
- Purpose Built
- Large Flat
- Regeneration Area
- Close To Transport

Copley Close, London, W7



Total area: approx. 73.0 sq. metres (785.5 sq. feet)