



Coldershaw Road, W13

£495,000

A two double bedroom ground floor conversion flat which benefits from a private West facing garden and off street parking.

Also comprises entrance hall, modern fitted bathroom and kitchen.

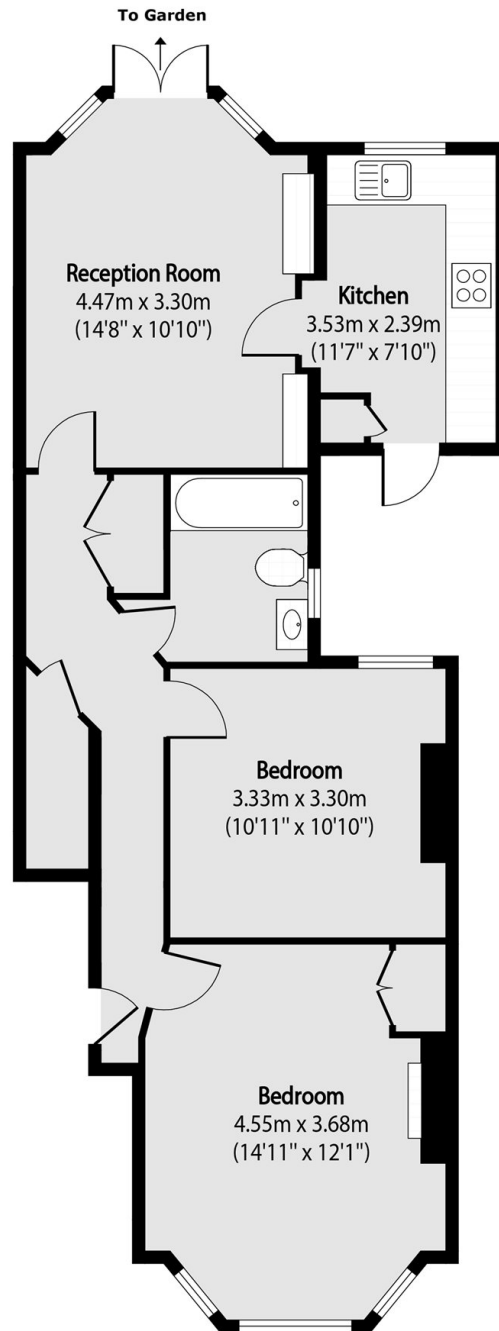
Located in this popular residential road which is well positioned for West Ealing station (Elizabeth line) and Northfields station (Piccadilly line).

Offered with long lease and no onward chain.

Features

- Conversion Flat
- West Facing Garden
- Two Double Bedrooms
- Long Lease
- Off street Parking
- No Onward Chain

Coldershaw Road,
London, W13



Total area (approx): 63.45 sq m (683 sq. ft)