



Coningsby Road, W5

£507 Per week

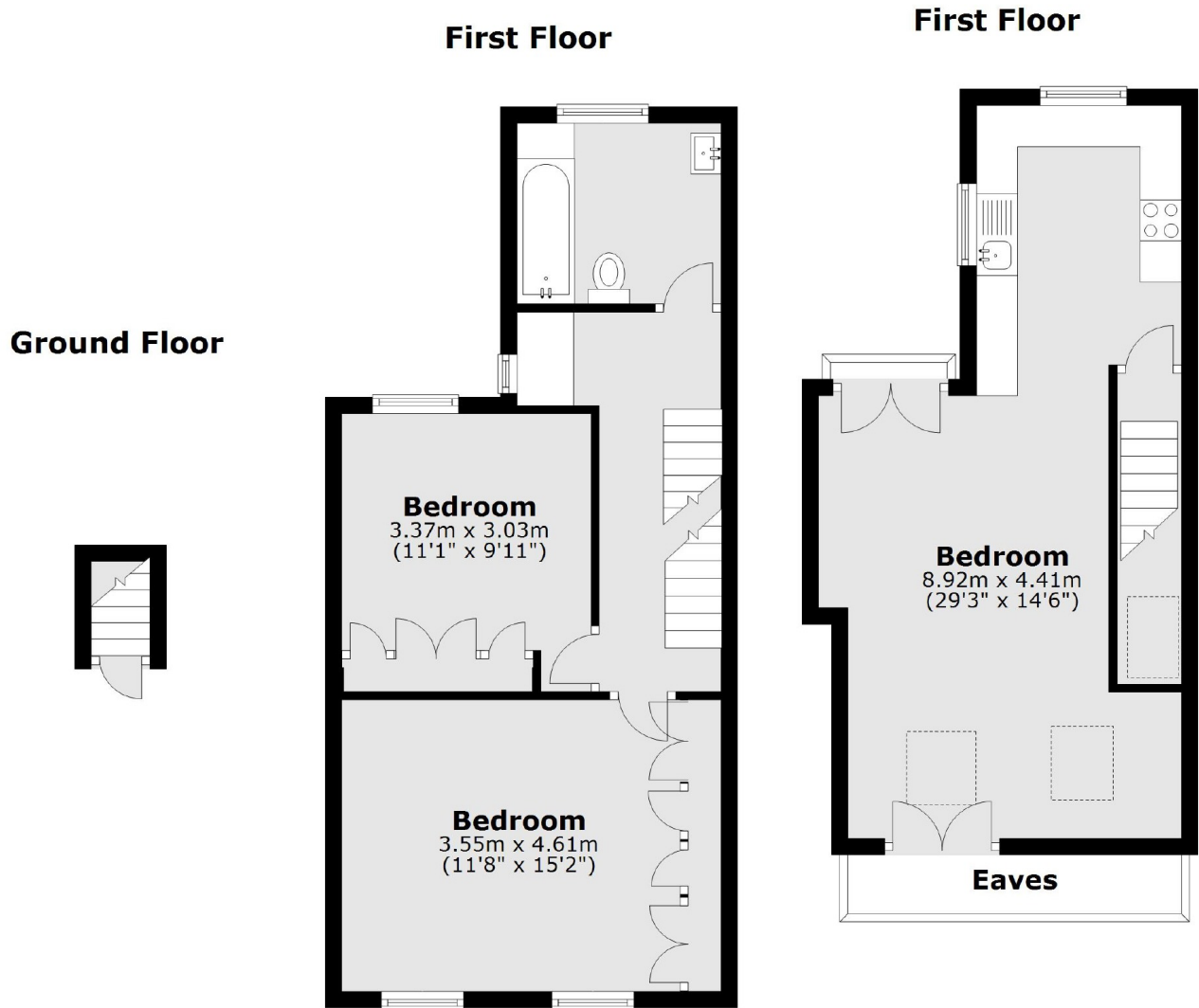
A completely refurbished and extended, two bedroom apartment, close to Lammas Park in Ealing. The property has two double bedrooms, brand new bathroom, and a large, brand new, open plan, kitchen and reception room.

The property is located on Coningsby Road in South Ealing, close to South Ealing or Northfields tube stations.

Features

- Two Bedrooms
- Refurbished
- Extended
- Modern Bathroom
- Open Plan
- Close To Transport Links

Coningsby Road,
London, W5



Total area: approx. 73.6 sq. metres (792.0 sq. feet)