



Popes Lane, W5

£5,000 Per calendar month

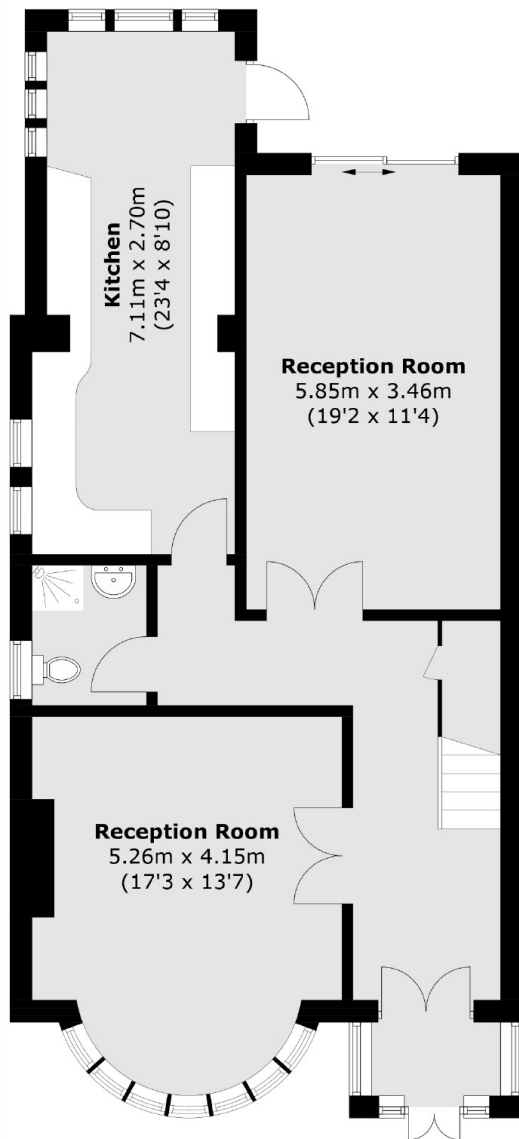
A four bedroom family home bursting with character, ample living space, wood flooring throughout and a large garden ideal for the children and entertaining.

Ideally located to both South Ealing and Acton Town Underground stations (Piccadilly and District Lines).

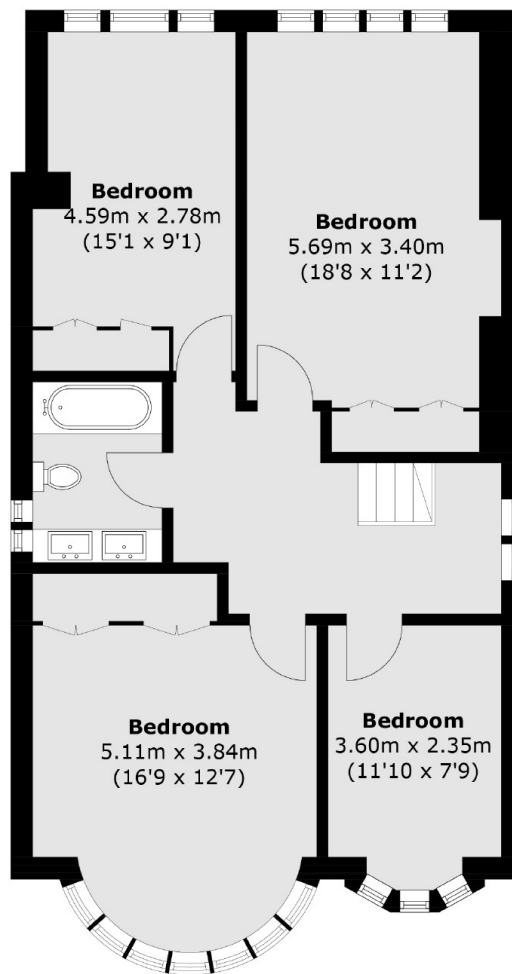
Features

- Four Double Bedrooms
- Off-Street Parking
- Wood Flooring
- Landscaped Garden
- Two Reception Rooms
- Two Bathrooms

Popes Lane, London, W5



Ground Floor



First Floor

Total area (approx.): 155.6 sq. m (1,674.9 sq. ft)