



## Convent Gardens, W5

### £899,950

An impressive three bedroom house located in the quiet cul de sac within walking distance of Northfields station and much sought after schools.

Offered in excellent condition throughout with a nice garden which benefits from a useful rear annexe.

Northfields Piccadilly line station and Blondin and Lammas Parks are on your doorstep.

### Features

- Three Double Bedrooms
- Excellent Condition
- Quiet Cul De Sac
- Garden Annexe
- Near Tube
- Close to Schools



## Convent Gardens, W5

The entrance porch leads through to the original front door and the entrance lobby with a guest WC.

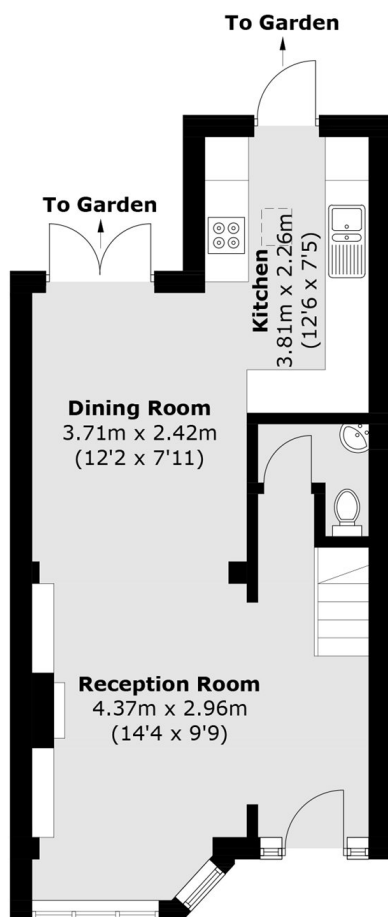
There are two interconnecting receptions with a feature fireplace and french doors to the rear garden. You then find the well fitted kitchen which is fully integrated.

On the two upper floors are the three good sized bedrooms, the main family bathroom and an ensuite shower room to the main bedroom.

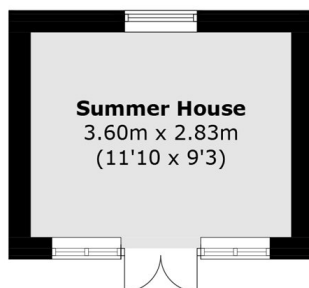
Convent Garden is well located for excellent schools including Ealing Fields High School and both Little Ealing Primary and Mount Carmel Primary Schools.



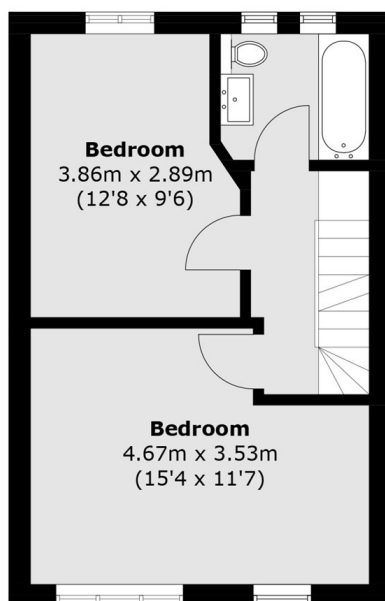
# Convent Gardens, London, W5



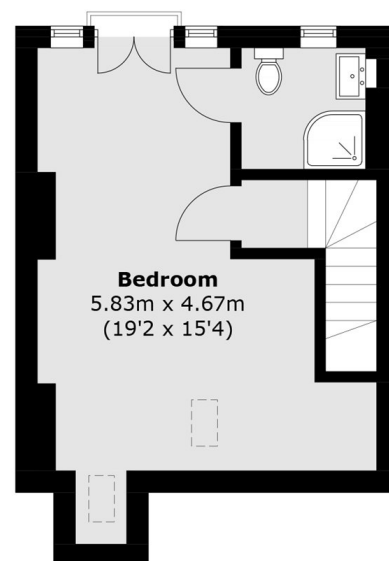
**Ground Floor**



**Outbuilding**



**First Floor**



**Second Floor**

Total area (approx.): 105.7 sq. m (1,137.6 sq. ft)  
Summer House: 10.3 sq. m (110.8 sq. ft)