



Shirley Gardens, W7

£265,000

This well presented one bedroom apartment is situated on the first floor of a secure, gated development.

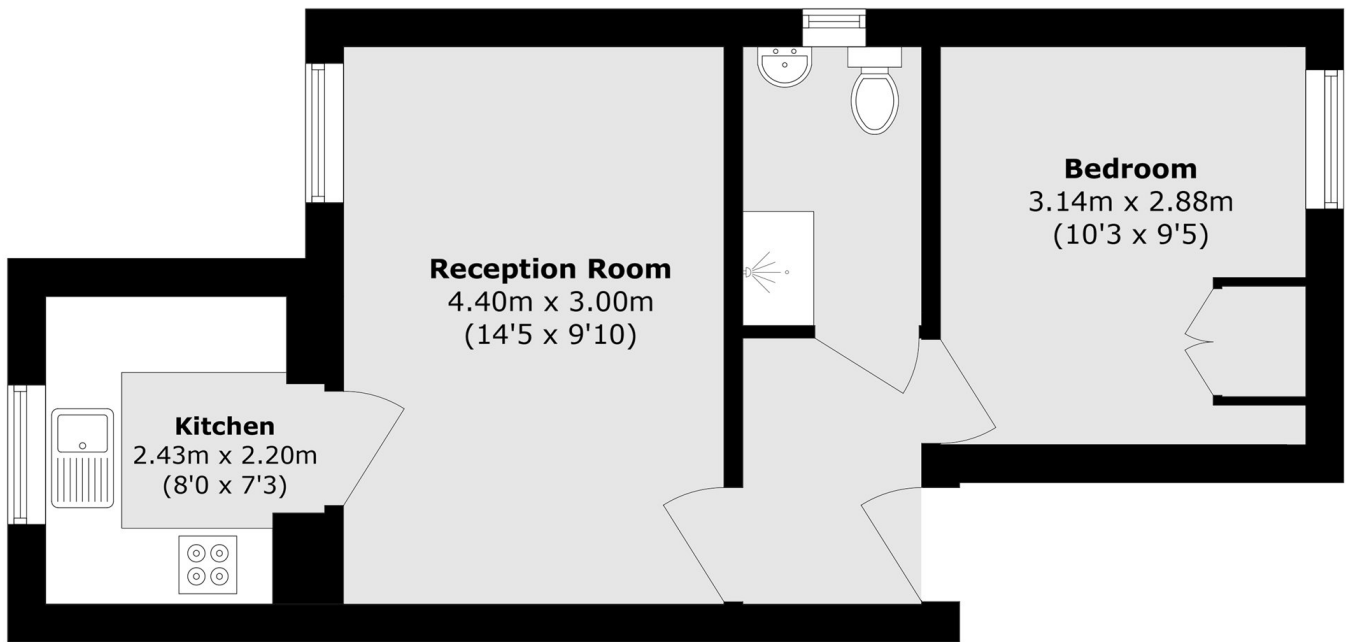
Offered to the market with no onward chain, it is worthy of consideration as a first-time buy or rental investment.

The property features a bright reception room, a separate modern kitchen, and is conveniently located for both Hanwell and West Ealing stations (Elizabeth Line).

Features

- Gated Development
- One Double Bedroom
- First Floor
- Share Of Freehold
- Private Parking
- Good Transport Links

Shirley Gardens, London, W7



Total area (approx.): 34.9 sq. m (375.6 sq. ft)