



Lancaster Gardens, W13

£1,300,000

An excellent five bedroom semi detached house located in this very popular enclave close to both Lammas and Walpole Parks.

Offering over 1650 sq.ft of accommodation laid out over three floors and a secluded garden.

Situated close to Northfields, South Ealing and West Ealing, with Ealing Broadway also within easy reach.

Features

Edwardian Semi Detached
Five Bedrooms
Close To Parks
Spacious Accommodation
Secluded Garden
Many Transport Options



Lancaster Gardens, W13

On arrival, you will be impressed with this quiet leafy street and the front of this handsome semi detached house.

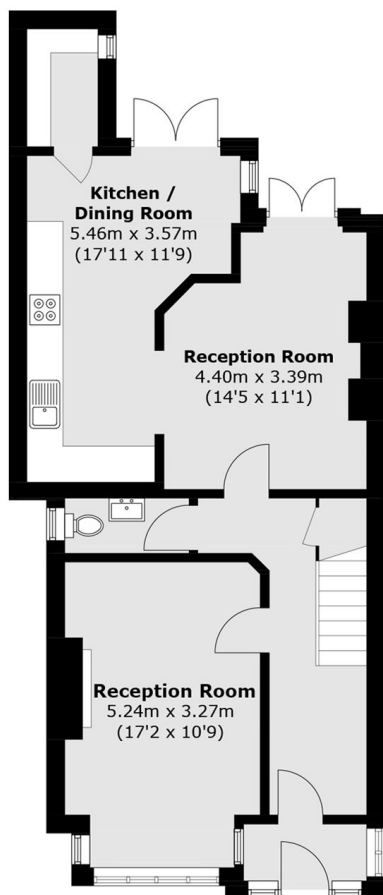
The wide reception hall leads through to the impressive front reception room with its feature fireplace. There is an inner lobby with a guest WC before you come through to the well fitted kitchen/breakfast room with a walk-in pantry.

On the first floor, there are four original bedrooms and the main bathroom with a further double bedroom and ensuite shower room on the second floor conversion.

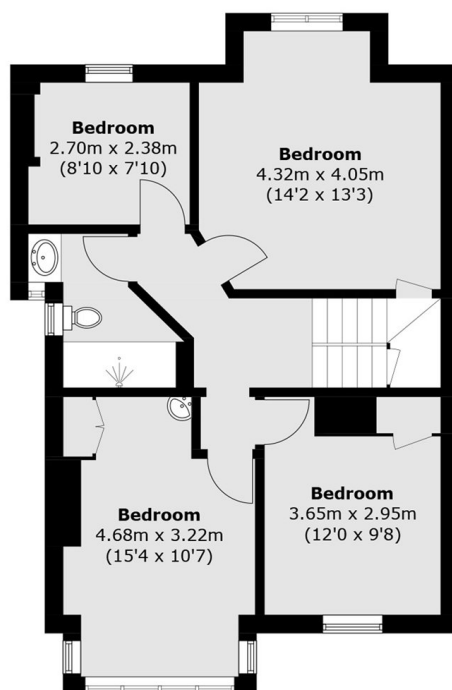
A home of real warmth and charm in a great location, viewing comes highly recommended.



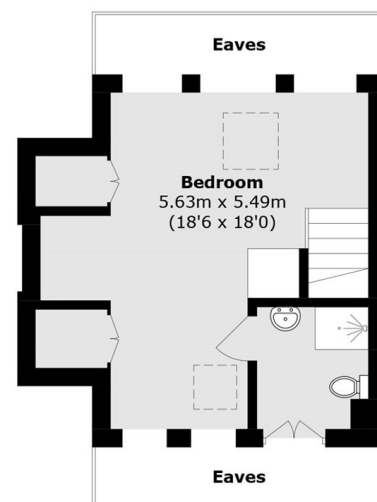
Lancaster Gardens, London, W13



Ground Floor



First Floor



Second Floor

Total area (approx.): 155.8 sq. m (1,677.0 sq. ft)
(Excluding Eaves)