



Boston Manor Road, TW8

£1,600 Per calendar month

A large, one bedroom split level apartment with a large private garden. The property has an open plan reception room and kitchen, then upstairs is a double bedroom and bathroom.

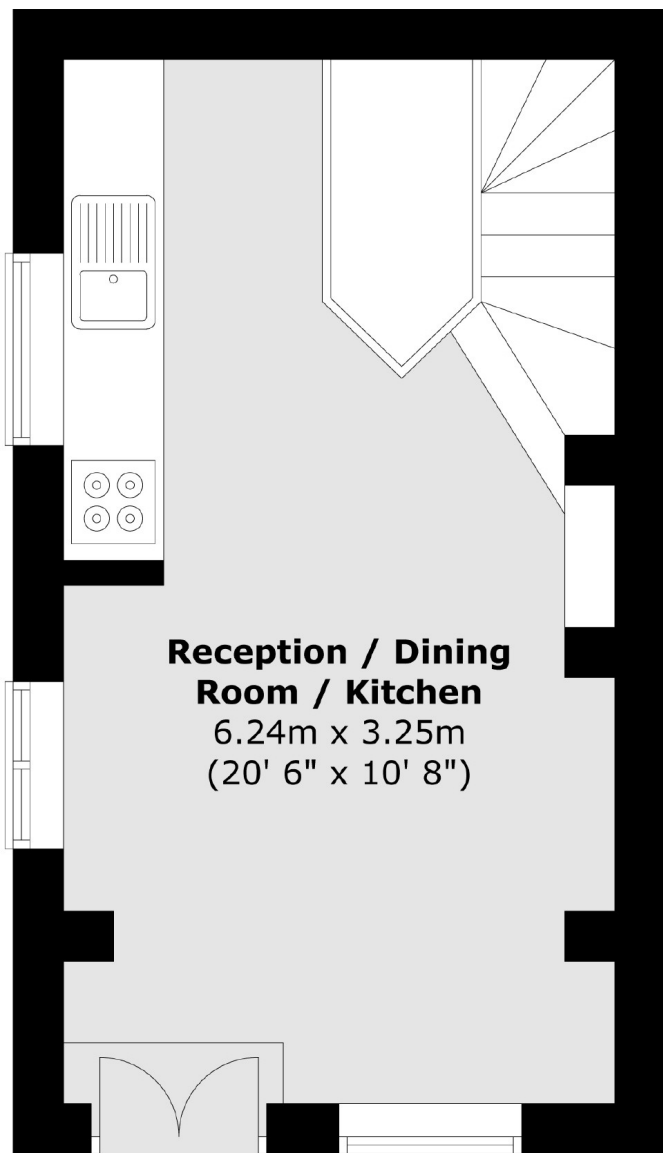
Situated just under half a mile from Boston Manor tube station. Brentford High Street and Mainline Station is also conveniently over a mile away offering bars, restaurants and shopping amenities.

Features

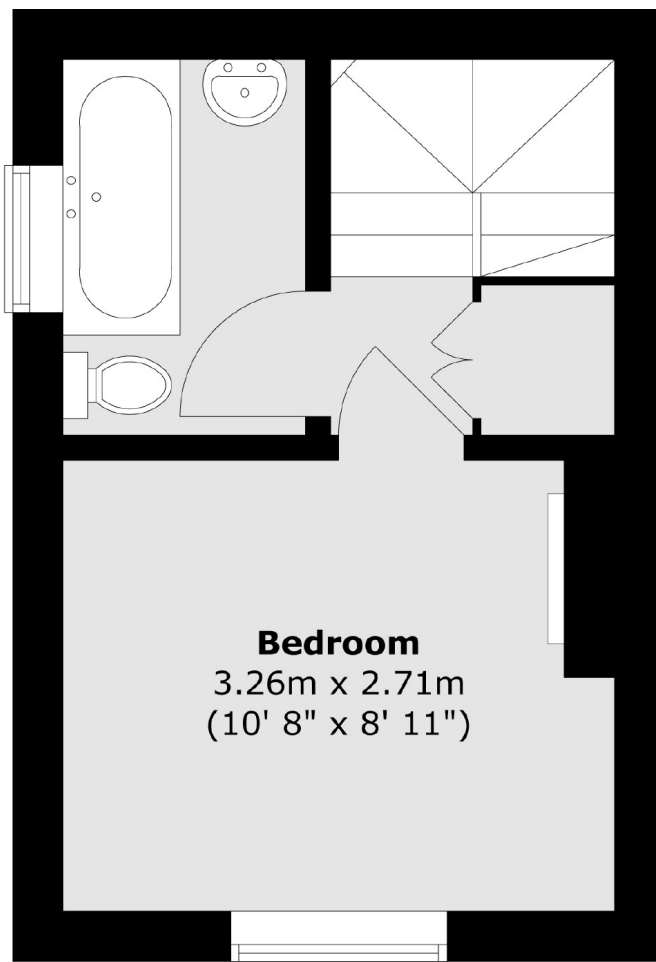
- Split Level One Bedroom
- Kitchen Diner
- One Bathroom
- Large Reception
- Gas Central Heating
- Private Garden

Boston Manor Road, Brentford, TW8

Ground Floor



First Floor



Total area (approx.) : 37.8 sq. m (407 sq. ft)