



Lionel Road North, TW8

£2,700 Per calendar month

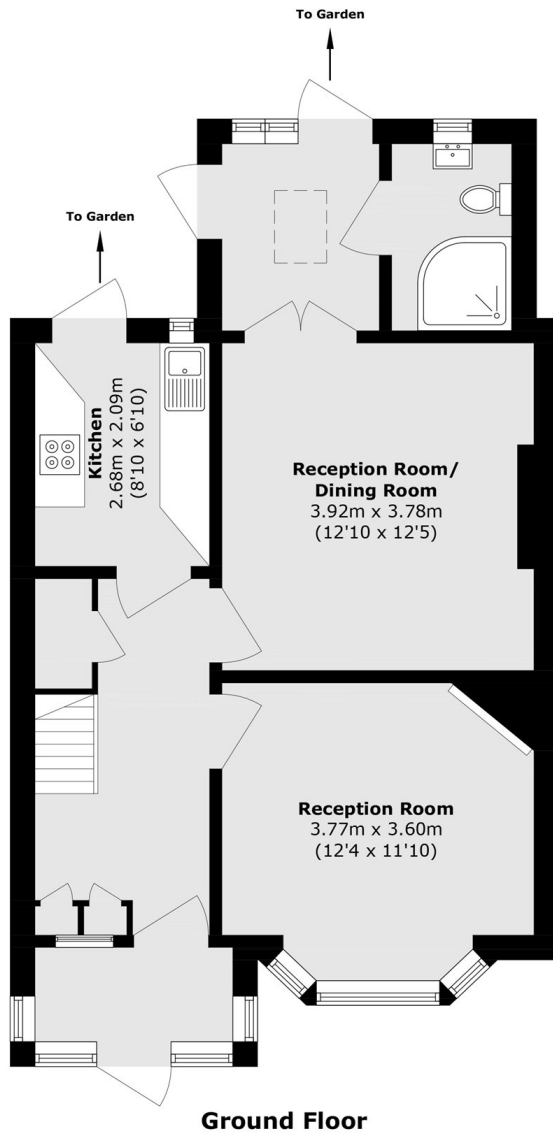
A three bedroom house split over two floors with views overlooking Gunnersbury Park. Two reception rooms, three bathrooms and a private garden this is an ideal family home.

Excellent transportation links to Ealing Broadway, Acton and Chiswick with easy access to Gunnersbury Park. Under a quarter of a mile to Lionel Road School.

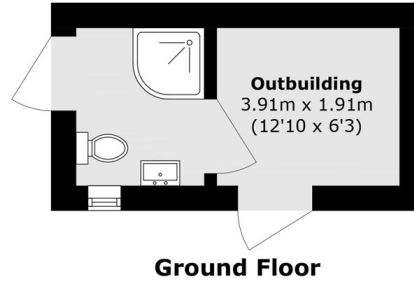
Features

- Family Home
- Three Bedrooms
- Two Reception Rooms
- Private Garden
- Good Transport Links
- Gunnersbury Park

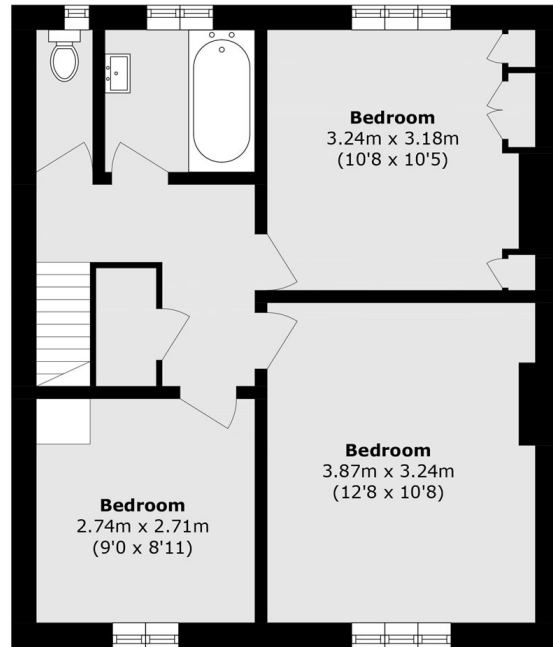
Lionel Road North, Brentford, TW8



Ground Floor



Ground Floor



First Floor

Total area (approx.): 99.0 sq. m (1065.6 sq. ft)
Outbuilding area (approx.): 7.5 sq. m (80.7 sq. ft)